

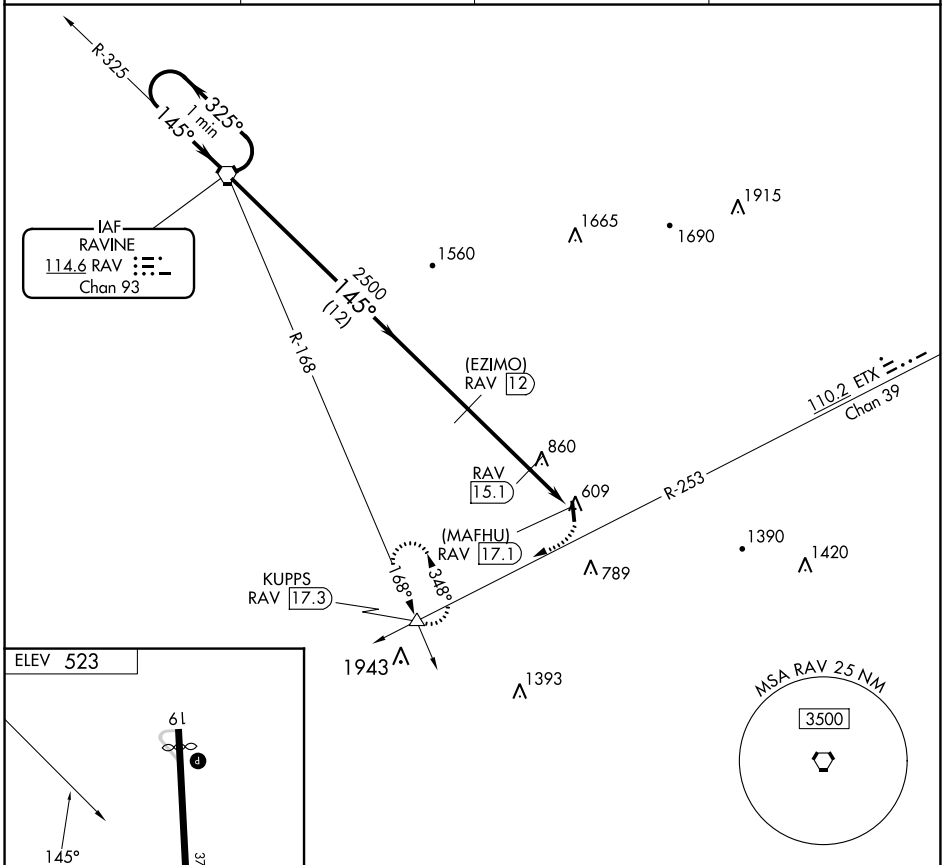
VORTAC RAV <b>114.6</b> Chan <b>93</b>	APP CRS <b>145°</b>	Rwy Idg TDZE Apt Elev <b>N/A</b> <b>N/A</b> <b>523</b>
--	------------------------	---

# VOR/DME or GPS-A

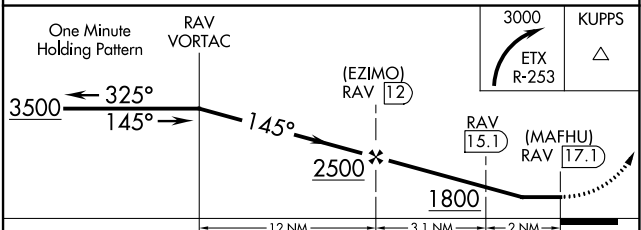
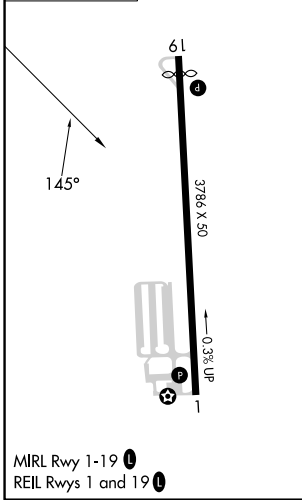
DECK (9D4)

**▼** Use Harrisburg Intl, PA altimeter setting. If not received, procedure NA. Circling Rwy 1 NA at night.  
**▲** NA MISSED APPROACH: Climbing right turn to 3000, intercept the ETX VORTAC R-253 to KUPPUS INT and hold.

AWOS-2 <b>118.45</b>	RDG ASOS <b>127.1</b>	HARRISBURG APP CON <b>118.25 269.45</b>	UNICOM <b>122.8 (CTAF) 0</b>
-------------------------	--------------------------	--	---------------------------------



ELEV 523



CATEGORY	A	B	C	D
CIRCLING	1140-1 617 (700-1)	1160-1 637 (700-1)	1160-1¾ 637 (700-1¾)	NA

NE-4, 03 OCT 2024 to 31 OCT 2024

NE-4, 03 OCT 2024 to 31 OCT 2024