

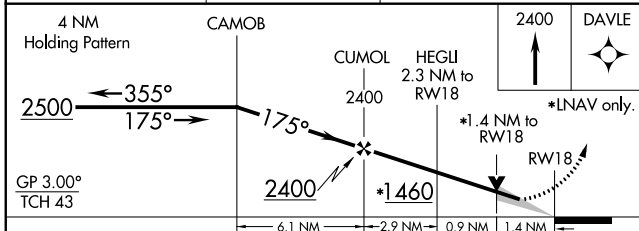
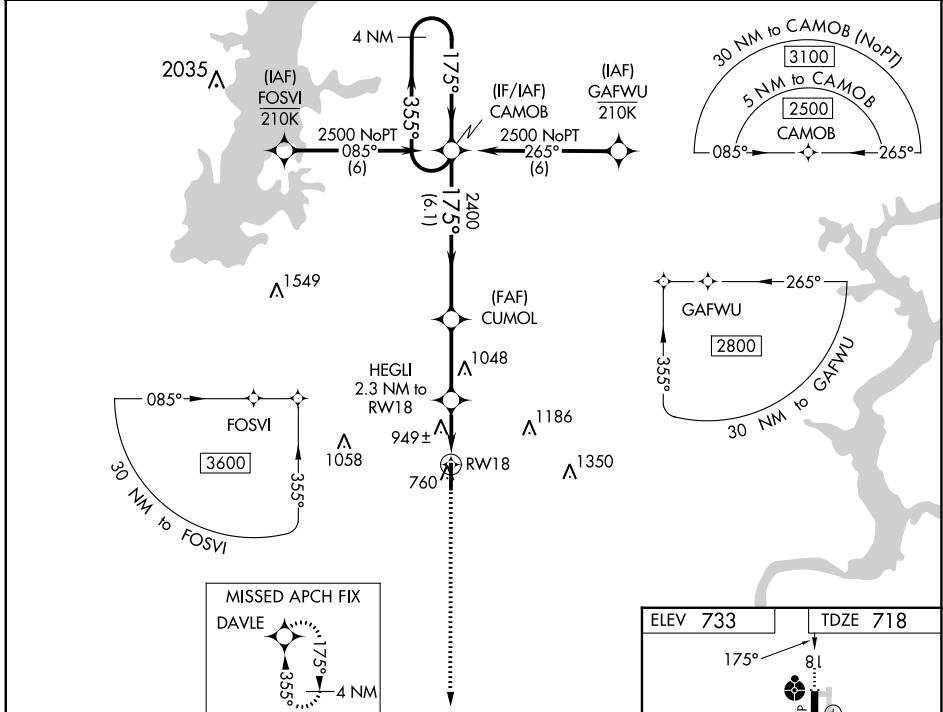
WAAS CH 63214 W18A	APP CRS 175°	Rwy Idg 5200 TDZE 718 Apt Elev 733
----------------------------------------	------------------------	---------------------------------------------------------------

RNAV (GPS) RWY 18

CLAREMORE RGNL (GCM)

<p>For uncompensated Baro-VNAV systems, LNAV/VNAV NA below -16°C (4°F) or above 54°C (130°F). DME/DME RNP-0.3 NA. For inop ALS, increase LNAV/VNAV Cats A/B visibility to 1½ SM.</p>	ODALS	MISSED APPROACH: Climb to 2400 direct DAVLE and hold.

AWOS-3PT 119,925	TULSA APP CON 119.1 360,825	UNICOM 122.7 (CTAF) 0
----------------------------	---------------------------------------	---------------------------------



ELEV 733	TDZE 718
----------	----------

Vertical Profile details:

- Altitudes: 81, 2400, 1460, 760, 36
- Distances: 0.7% UP, 5.2 X 0005
- Waypoints: DAVLE, RW18

CATEGORY	A	B	C	D
LPV DA	968-¾	250 (300-¾)		NA
LNAV/VNAV DA	1281-1½	563 (600-1½)		NA
LNAV MDA	1200-¾	482 (500-¾)	1200-1¼ 482 (500-1¼)	NA
CIRCLING	1260-1	527 (600-1)	1380-1¾ 647 (700-1¾)	NA

SC-1, 03 OCT 2024 to 31 OCT 2024

SC-1, 03 OCT 2024 to 31 OCT 2024