

VORTAC TUL <b>114.4</b> Chan <b>91</b>	APP CRS <b>060°</b>	Rwy Idg TDZE Apt Elev	<b>N/A</b> <b>N/A</b> <b>733</b>
--	------------------------	-----------------------------	--

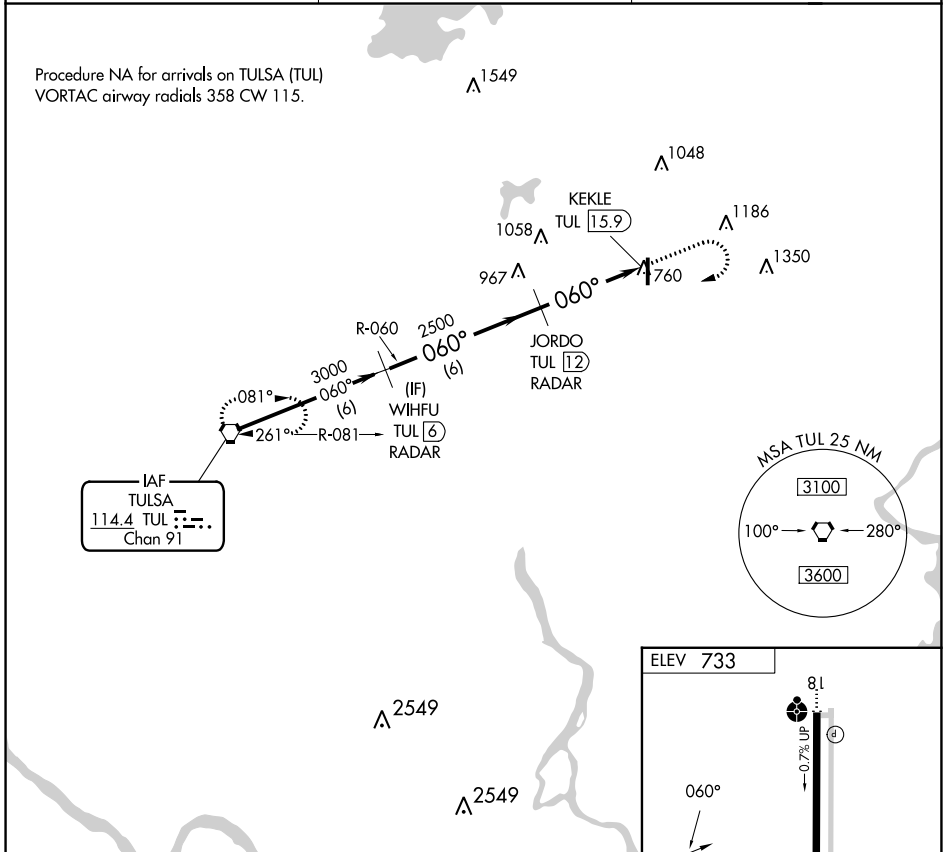
# VOR/DME-B

CLAREMORE RGNL (GCM)

**▽** If local altimeter setting not received, use Tulsa Intl altimeter setting and increase all MDAs 60 feet.

MISSED APPROACH: Climb to 2500 then climbing right turn to 3000 direct TUL VORTAC and hold.

AWOS-3PT <b>119.925</b>	TULSA APP CON <b>119.1 360.825</b>	UNICOM <b>122.7 (CTAF) 0</b>
----------------------------	---------------------------------------	---------------------------------

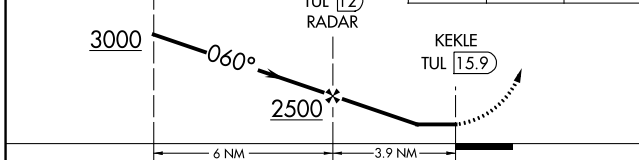


Procedure Turn NA

WIHFU TUL (6) RADAR

JORDO TUL (12) RADAR

KEKLE TUL (15.9)



ELEV 733

060°

81

0.7% UP

5200 X 75

36

MIRL Rwy 18-36  
REIL Rwy 36 0

CATEGORY	A	B	C	D
<b>C</b> CIRCLING	1260-1	527 (600-1)	1380-1 <sup>3</sup> / <sub>4</sub> 647 (700-1 <sup>3</sup> / <sub>4</sub> )	NA

SC-1, 03 OCT 2024 to 31 OCT 2024

SC-1, 03 OCT 2024 to 31 OCT 2024