

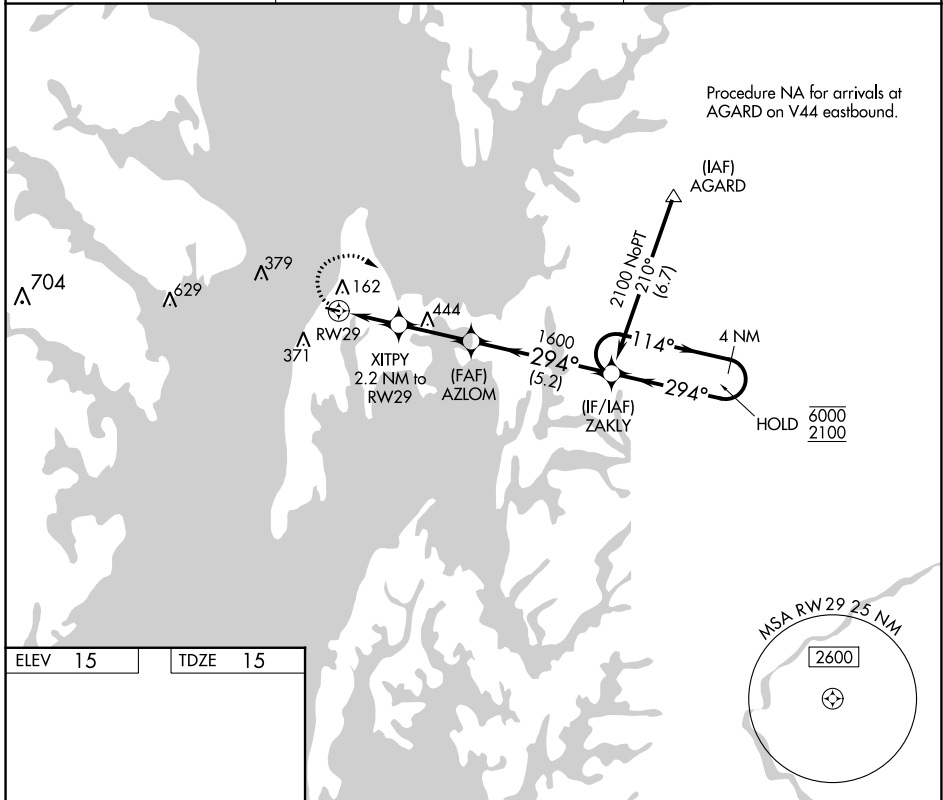
APP CRS	Rwy ldg	2714
294°	TDZE	15
	Apt Elev	15

RNAV (GPS) RWY 29

BAY BRIDGE (W29)

RNP APCH.	MISSED APPROACH: Climbing right turn to 2100 direct ZAKLY and hold.
<p>⚠ Rwy 29 helicopter visibility reduction below 1 SM NA.</p>	

AWOS-3 120.575	POTOMAC APP CON 119.0 282.275	UNICOM 122.725 (CTAF) 0
--------------------------	---	-----------------------------------

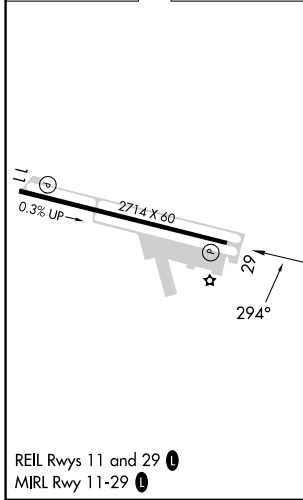


Procedure NA for arrivals at AGARD on V44 eastbound.

NE-3, 03 OCT 2024 to 31 OCT 2024

NE-3, 03 OCT 2024 to 31 OCT 2024

ELEV 15	TDZE 15
---------	---------



2100	ZAKLY	Visual Segment - Obstacles.	ZAKLY	4 NM Holding Pattern
CATEGORY	A	B	C	D
LNAV MDA	480-1	465 (500-1)	NA	
C CIRCLING	500-1 485 (500-1)	800-1 785 (800-1)	NA	