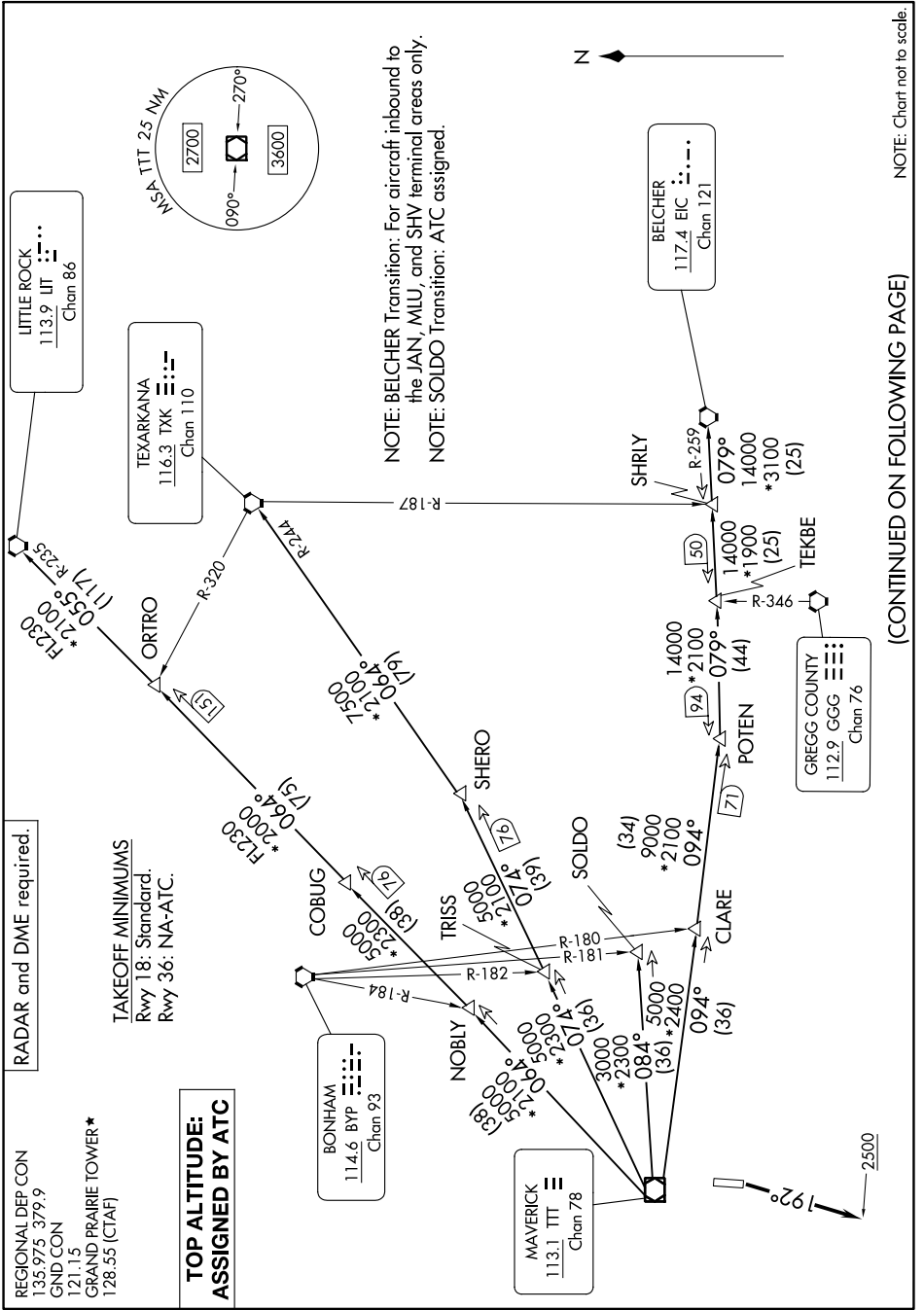


DALLAS THREE DEPARTURE

GRAND PRAIRIE, TEXAS

SC-2, 03 OCT 2024 to 31 OCT 2024



RADAR and DME required.

TAKEOFF MINIMUMS

Rwy 18: Standard.
Rwy 36: NA-ATC.

**TOP ALTITUDE:
ASSIGNED BY ATC**

REGIONAL DEP CON
135.975 379.9
GND CON
121.15
GRAND PRAIRIE TOWER*
128.55 (CTAF)

BONHAM
114.6 BYP
Chan 93

LITTLE ROCK
113.9 UT
Chan 86

TEXARKANA
116.3 TXK
Chan 110

MAVERICK
113.1 TTT
Chan 78

GREGG COUNTY
112.9 GGG
Chan 76

BELCHER
117.4 EIC
Chan 121

NOTE: BELCHER Transition: For aircraft inbound to the JAN, MLU, and SHV terminal areas only.
NOTE: SOLDLO Transition: ATC assigned.

(CONTINUED ON FOLLOWING PAGE)

NOTE: Chart not to scale

DALLAS THREE DEPARTURE

GRAND PRAIRIE, TEXAS

GRAND PRAIRIE MUNI (GPM)

SC-2, 03 OCT 2024 to 31 OCT 2024