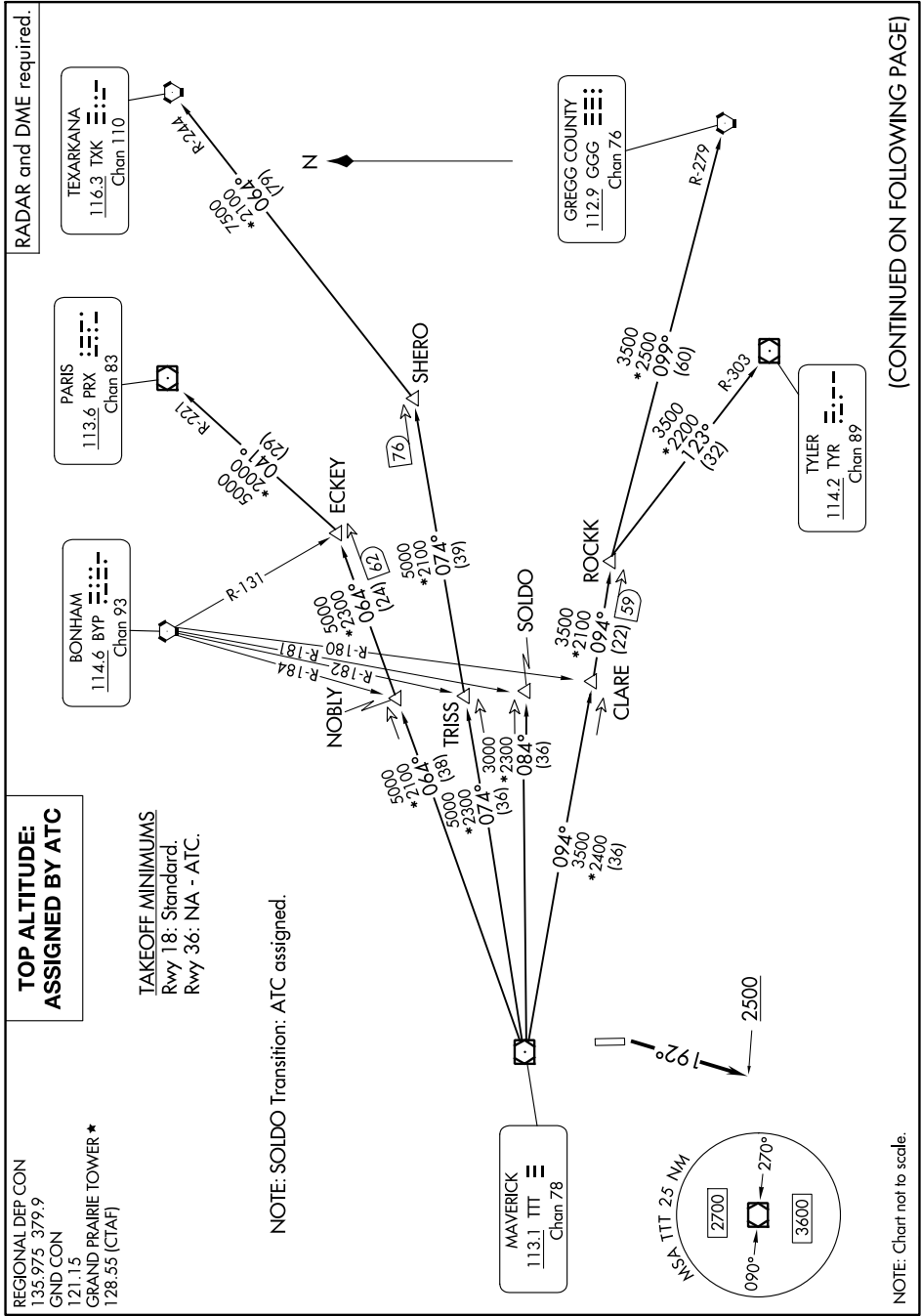


GARLAND FIVE DEPARTURE

SC-2, 03 OCT 2024 to 31 OCT 2024



**TOP ALTITUDE:
ASSIGNED BY ATC**

TAKEOFF MINIMUMS
Rwy 18: Standard.
Rwy 36: NA - ATC.

NOTE: SOLDO Transition: ATC assigned.

REGIONAL DEP CON
135.975 379.9
GND CON
121.15
GRAND PRAIRIE TOWER *
128.55 (CTAF)

GARLAND FIVE DEPARTURE (GARL5.TTT) 25JAN24

NOTE: Chart not to scale.

(CONTINUED ON FOLLOWING PAGE)

SC-2, 03 OCT 2024 to 31 OCT 2024