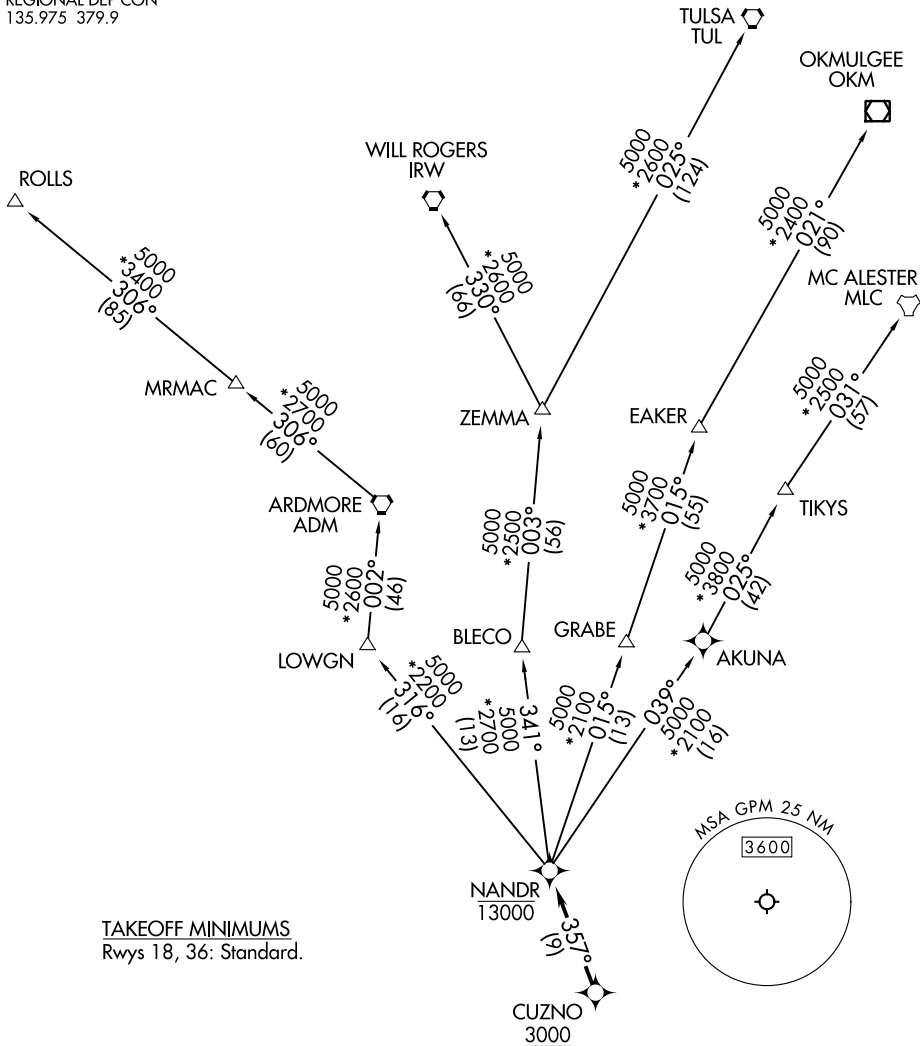


# NANDR TWO DEPARTURE (RNAV)

GND CON  
121.15  
GRAND PRAIRIE TOWER \*  
128.55 (CTAF)  
REGIONAL DEP CON  
135.975 379.9

RNAV 1 - DME/DME/IRU or GPS.  
RADAR required.

**TOP ALTITUDE:  
ASSIGNED BY ATC**



SC-2, 03 OCT 2024 to 31 OCT 2024

SC-2, 03 OCT 2024 to 31 OCT 2024

NOTE: EAKER transition: For TUL terminal arrivals only.  
NOTE: TULSA transition: For all aircraft overflying TUL VORTAC.  
NOTE: Aircraft arriving to the Oklahoma City terminal area, file and expect the ZEMMA enroute transition.

(NARRATIVE ON FOLLOWING PAGE)

NOTE: Chart not to scale.

# NANDR TWO DEPARTURE (RNAV)