

# TEXOMA FIVE DEPARTURE

REGIONAL DEP CON  
 135.975 379.9  
 GND CON  
 121.15  
 GRAND PRAIRIE TOWER★  
 128.55 (CTAF)

**TOP ALTITUDE:  
 ASSIGNED BY ATC**

TULSA  
 114.4 TUL  
 Chan 91

RADAR and DME required.

WILL ROGERS  
 114.1 IRW  
 Chan 88

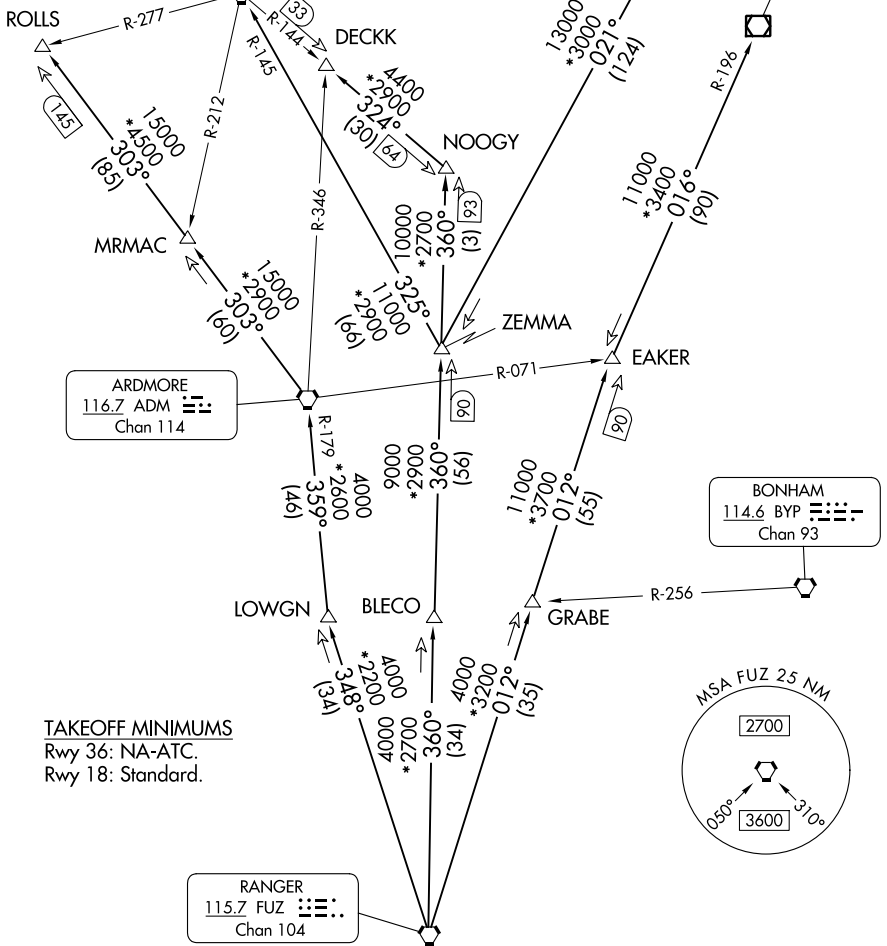
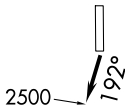
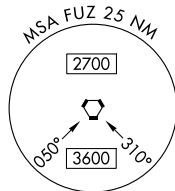
OKMULGEE  
 114.9 OKM  
 Chan 96

ARDMORE  
 116.7 ADM  
 Chan 114

BONHAM  
 114.6 BYP  
 Chan 93

RANGER  
 115.7 FUZ  
 Chan 104

**TAKEOFF MINIMUMS**  
 Rwy 36: NA-ATC.  
 Rwy 18: Standard.



SC-2, 03 OCT 2024 to 31 OCT 2024

SC-2, 03 OCT 2024 to 31 OCT 2024

(CONTINUED ON FOLLOWING PAGE)

NOTE: Chart not to scale.

# TEXOMA FIVE DEPARTURE