

APP CRS 188°	Rwy Idg TDZE Apt Elev	4199 5996 5999
------------------------	-----------------------------	---

RNAV (GPS) RWY 19

VALLE (40G)

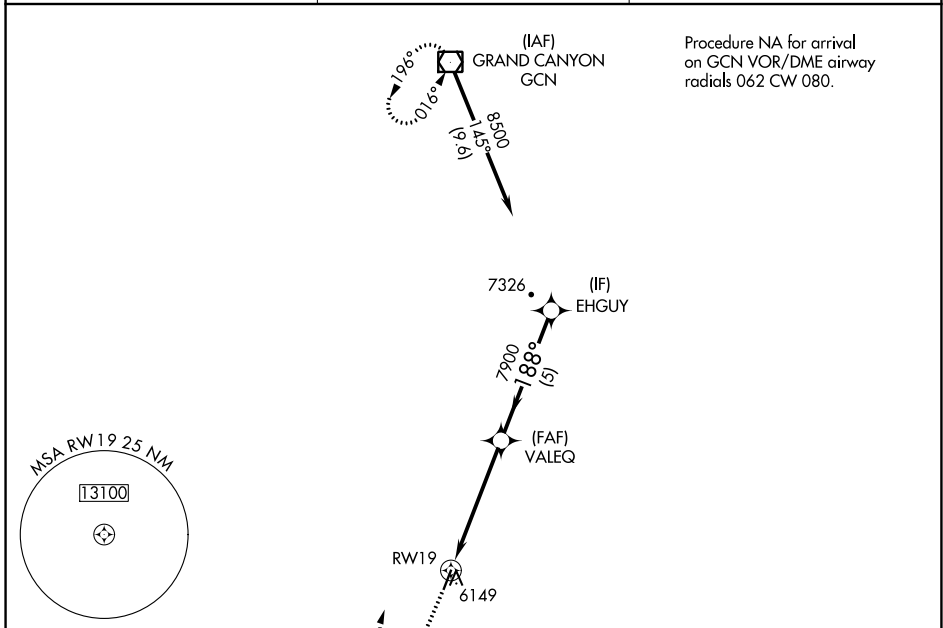
RNP APCH.
 Procedure NA at night. Rwy 19 helicopter visibility reduction below 1 SM NA. Use Grand Canyon NH Park altimeter setting; when not received, procedure NA.

MISSED APPROACH: Climb to 7000 then climbing right turn to 10000 direct GCN VOR/DME and hold.

GCN ASOS
124.3

LOS ANGELES CENTER
124.85 319.2

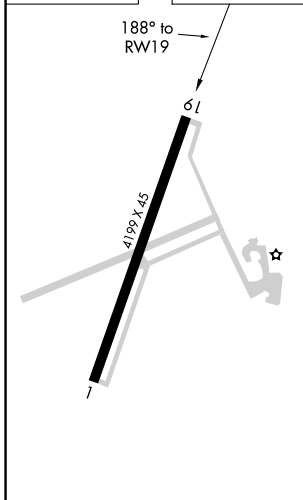
UNICOM
122.8 (CTAF)



SW-4, 03 OCT 2024 to 31 OCT 2024

SW-4, 03 OCT 2024 to 31 OCT 2024

ELEV 5999	TDZE 5996
-----------	-----------



7000	10000	GCN	
↑	↷	◻	
RWY19		VALEQ	EHGUY
7900		7900	8500
≤ 3.50° TCH 50		188°	
5 NM		5 NM	
CATEGORY	A	B	C
LNNAV MDA	6560-1	564 (600-1)	6560-1 ⁵ / ₈ 564 (600-1 ⁵ / ₈)
CIRCLING	6620-1 621 (700-1)	6640-1 641 (700-1)	6640-1 ³ / ₄ 641 (700-1 ³ / ₄)
			NA