

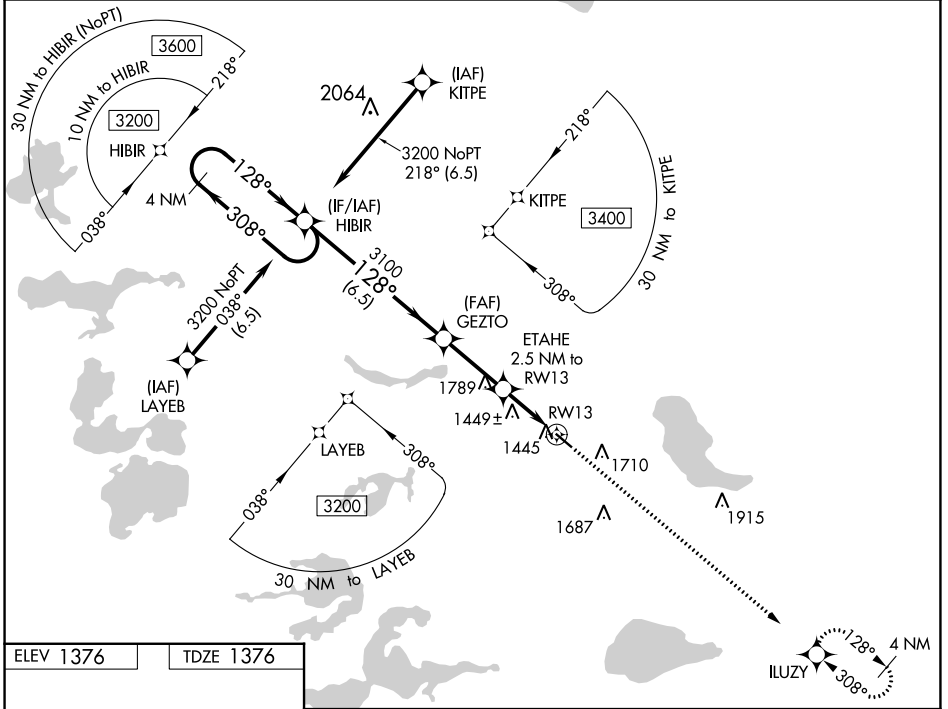
WAAS CH 62933 W13A	APP CRS 128°	Rwy Idg TDZE 4102 1376 Apt Elev 1376
--	------------------------	--

RNAV (GPS) RWY 13

PERHAM MUNI (16D)

<p>⚠ NA Baro-VNAV NA. DME/DME RNP-0.3 NA. Helicopter visibility reduction below 3/4 SM NA. Use Detroit Lakes altimeter setting; when not received, use Wadena altimeter setting.</p> <p>⚠ NA</p>	<p>MISSED APPROACH: Climb to 3000 direct ILUZY and hold.</p>
--	--

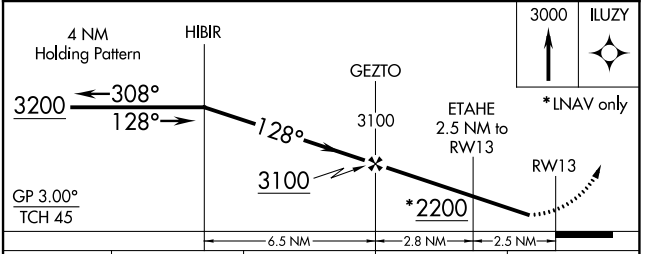
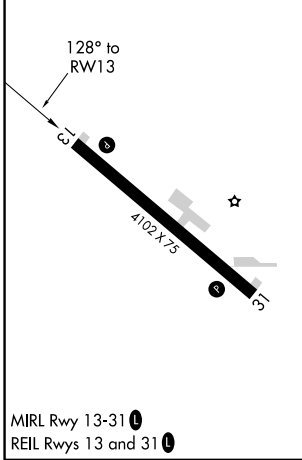
<p>MINNEAPOLIS CENTER 126.1 269.2</p>	<p>GCO 121.725</p>	<p>CTAF 122.9 ①</p>
--	-------------------------------	---------------------------------------



NC-1, 03 OCT 2024 to 31 OCT 2024

NC-1, 03 OCT 2024 to 31 OCT 2024

ELEV 1376	TDZE 1376
-----------	-----------



CATEGORY	A	B	C	D
LPV DA	1671-1	295 (300-1)		NA
LNAV/VNAV DA	1671-1	295 (300-1)		NA
LNAV MDA	1760-1	384 (400-1)		NA
C CIRCLING	2120-1	744 (800-1)		NA