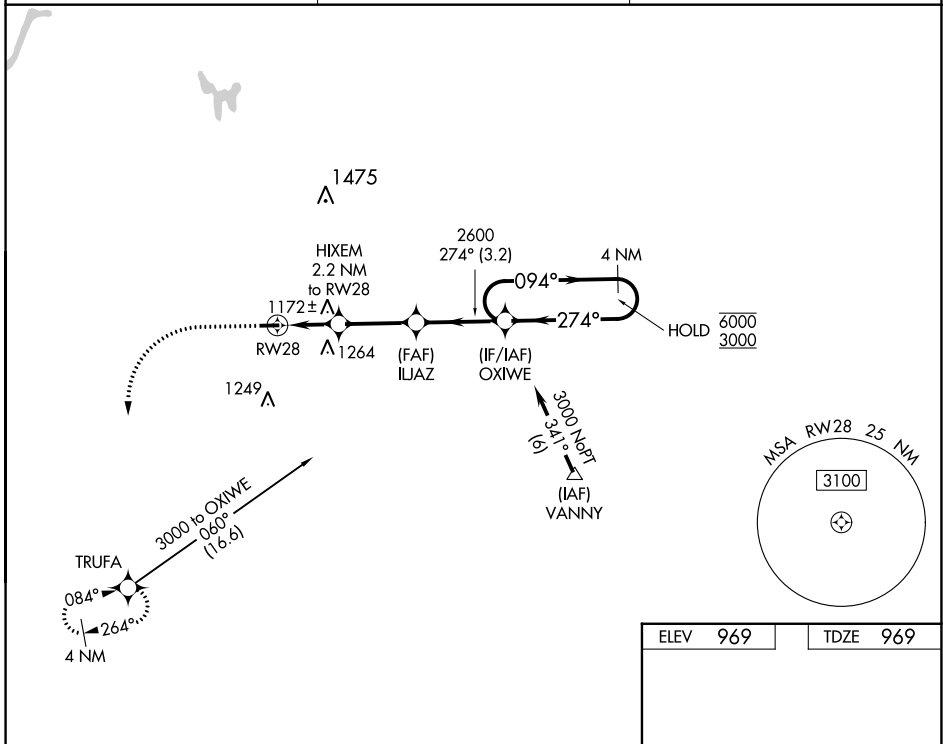


APP CRS	Rwy Idg	<b>3499</b>
<b>274°</b>	TDZE	<b>969</b>
	Apt Elev	<b>969</b>

# RNAV (GPS) RWY 28

LAKEVIEW/GRIFFITH FLD (13C)

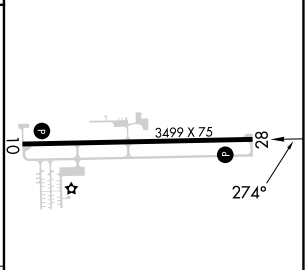
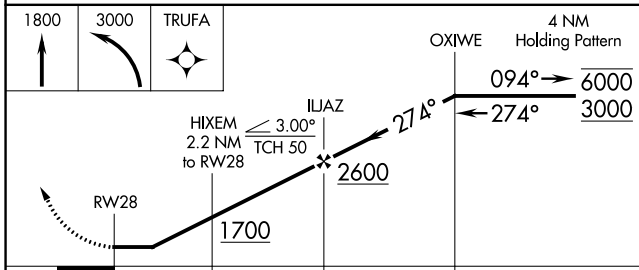
RNP APCH - GPS.		MISSED APPROACH: Climb to 1800 then climbing left turn to 3000 direct TRUFA and hold.
<p><b>▽</b> Procedure NA at night. Use Big Rapids altimeter setting; when not received, use Mount Pleasant altimeter setting and increase all MDAs 60 feet. Rwy 28 helicopter visibility reduction below 1 SM NA.</p> <p><b>△</b> NA</p>	<p>RQB AWOS-3P <b>125.875</b></p>	<p>GREAT LAKES APP CON * <b>124.6 257.6</b></p>
		<p>UNICOM <b>122.8 (CTAF) 0</b></p>



EC-1, 03 OCT 2024 to 31 OCT 2024

EC-1, 03 OCT 2024 to 31 OCT 2024

ELEV	969	TDZE	969
------	-----	------	-----



CATEGORY	A	B	C	D
LNAV MDA	1480-1	511 (600-1)	NA	
<b>C</b> CIRCLING	1480-1 511 (600-1)	1580-1 611 (700-1)	NA	

MIRL Rwy 10-28 **0**  
REIL Rwy 10 and 28 **0**