

APP CRS	Rwy Idg	3199
306°	TDZE	888
	Apt Elev	888

RNAV (GPS) RWY 30

WARREN MUNI (D37)

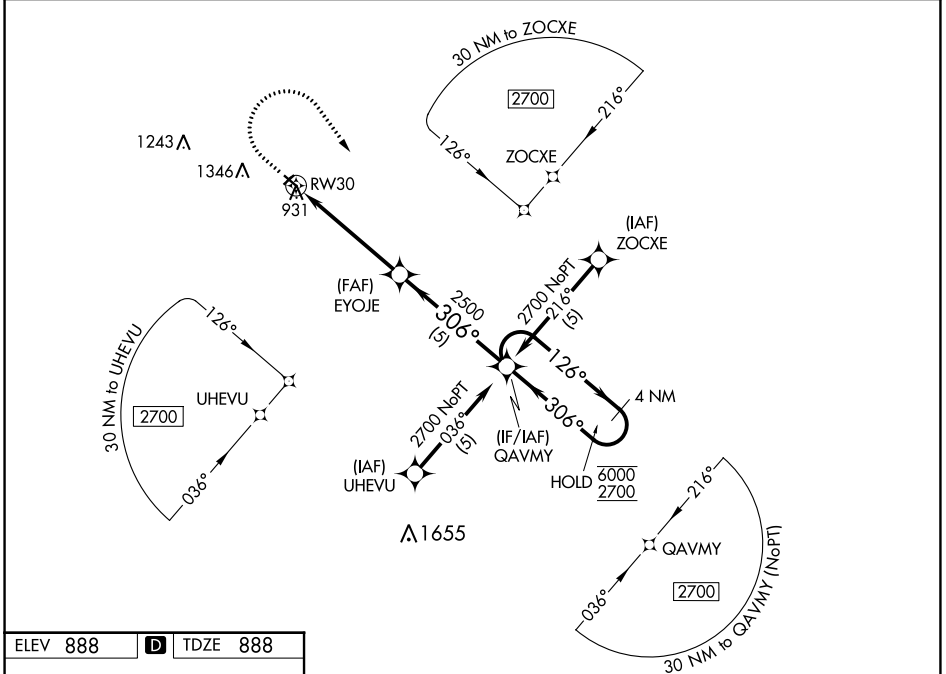
RNP APCH.

▽ Circling NA to Rws 4 and 22. Rwy 30 helicopter visibility reduction below ¾ SM NA. Use Crookston altimeter setting.

▲ NA

MISSED APPROACH: Climb to 2000 then climbing right turn to 2700 direct QAVMY and hold.

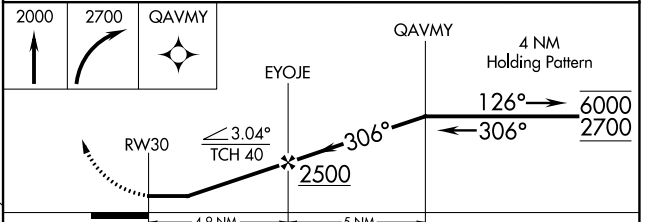
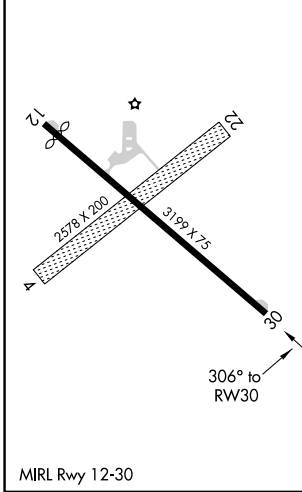
CKN AWOS-3 126.425	GRAND FORKS APP CON ★ 118.1 318.1	UNICOM 122.8 (CTAF)
------------------------------	---	-------------------------------



NC-1, 03 OCT 2024 to 31 OCT 2024

NC-1, 03 OCT 2024 to 31 OCT 2024

ELEV 888	D	TDZE 888
----------	----------	----------



CATEGORY	A	B	C	D
LNAV MDA	1480-1	592 (600-1)	NA	
CIRCLING	1480-1	1760-1¼	NA	
	592 (600-1)	872 (900-1¼)		