

APP CRS	Rwy Idg	5032
305°	TDZE	5723
	Apt Elev	5737

RNAV (GPS) RWY 31

ESCALANTE MUNI (1L7)

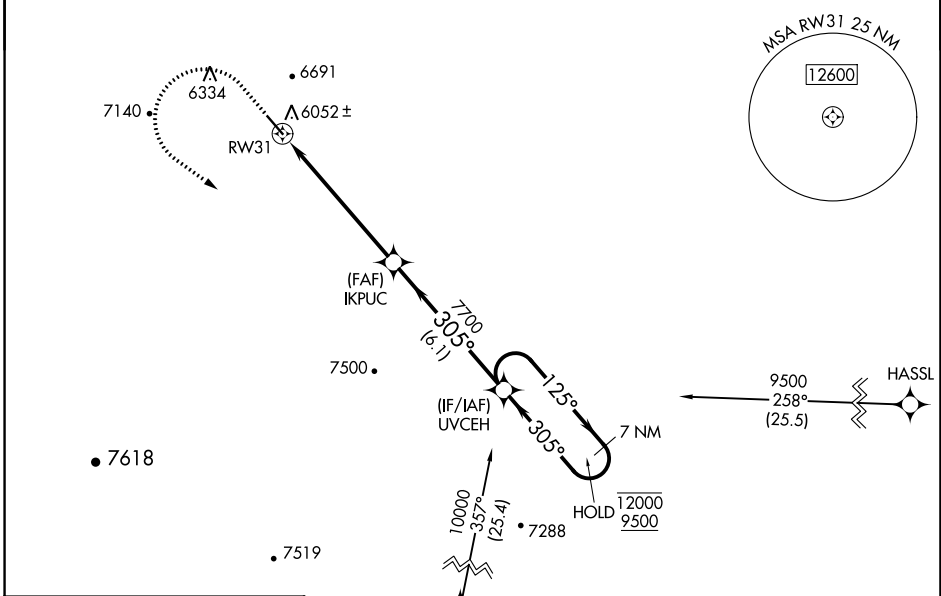
RNP APCH - GPS.

▼ Baro-VNAV NA. Rwy 31 helicopter visibility reduction below ¾ SM NA. Circling NA northeast of Rwy 13-31. Procedure NA at night. Use Page altimeter setting.

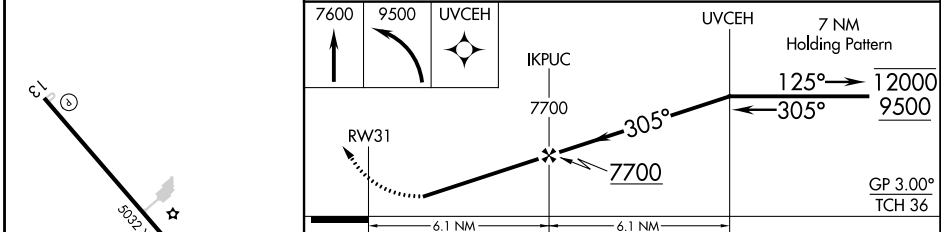
▲ NA

MISSED APPROACH: Climb to 7600 then climbing left turn to 9500 direct UVCEH and hold, continue climb-in-hold to 9500.
 *Missed approach requires minimum climb of 328 feet per NM to 8000.
 #Missed approach requires minimum climb of 306 feet per NM to 7900.

PGA ASOS 120.625	SALT LAKE CENTER 133.6 269.25	UNICOM 122.8 (CTAF) 0
----------------------------	---	---------------------------------

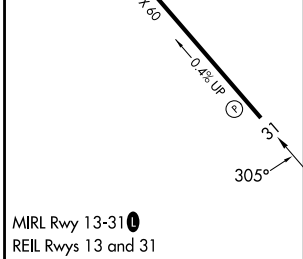


ELEV 5737	TDZE 5723
-----------	-----------



7600	9500	UVCEH	UVCEH	7 NM Holding Pattern
↑	↶	✧	↶	↷
RW31	IKPUC	7700	7700	12000 9500
		305°	305°	125°
				GP 3.00° TCH 36
	6.1 NM	6.1 NM		

CATEGORY	A	B	C	D
LNAV/VNAV DA*	6534-2½	811 (800-2½)		NA
LNAV MDA#	6720-1¼ 997 (1000-1¼)	6720-1½ 997 (1000-1½)		NA
LNAV/VNAV DA	7169-6	1446 (1500-6)		NA
LNAV MDA	6960-1¼ 1237 (1300-1¼)	6960-1½ 1237 (1300-1½)		NA
CIRCLING	6960-1¼ 1223 (1300-1¼)	6960-1½ 1223 (1300-1½)		NA



SW-4, 03 OCT 2024 to 31 OCT 2024

SW-4, 03 OCT 2024 to 31 OCT 2024