

| | | |
|-------------|----------|-------------|
| APP CRS | Rwy Idg | 4397 |
| 055° | TDZE | 1270 |
| | Apt Elev | 1270 |

RNAV (GPS) RWY 5

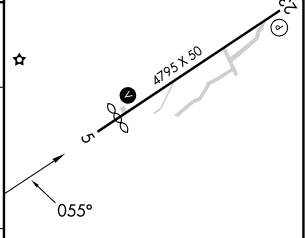
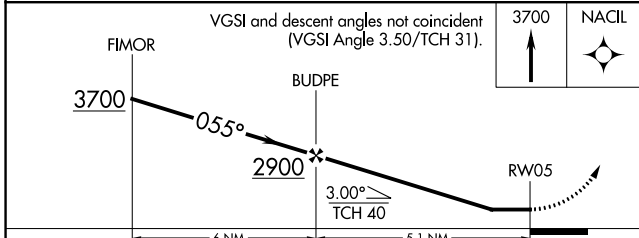
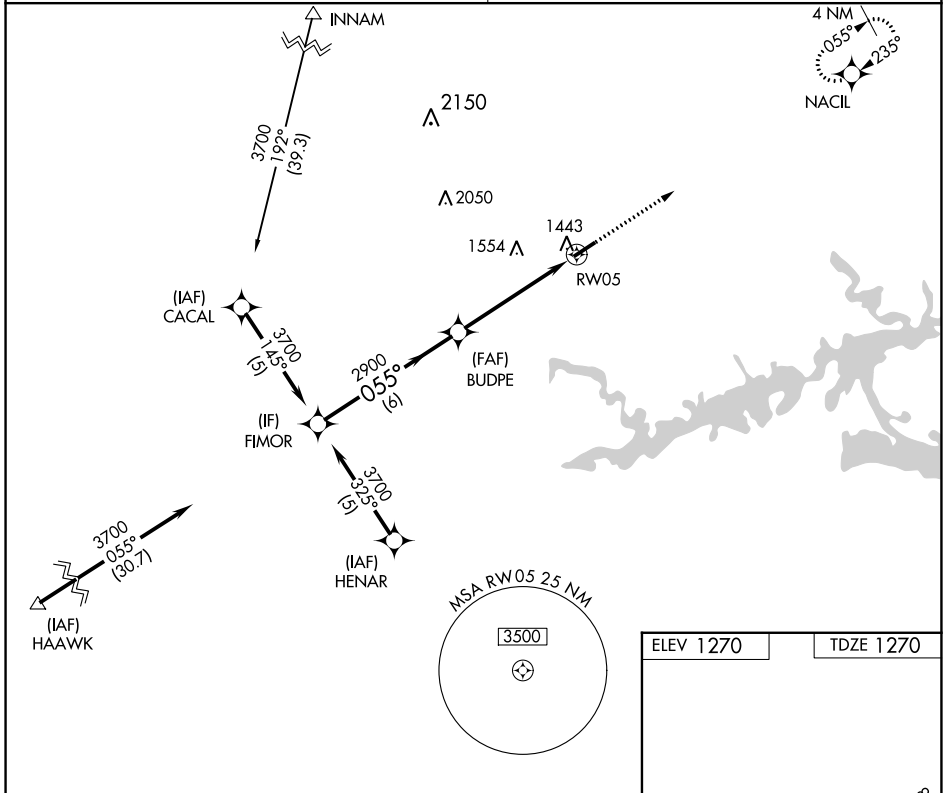
HOLLEY MOUNTAIN AIRPARK (2A2)

RNP APCH - GPS.

▽ Rwy 5 helicopter visibility reduction below 1 SM NA. Straight-in Rwy 5 NA at night, Circling Rwy 5 NA at night. Obtain local altimeter setting on CTA#; when not received, use Marion County Rgnl altimeter setting and increase all MDA's 180 feet and LNAV visibilities Cat C ½ SM, and Circling visibility Cat C ¾ SM.

△ NA MISSED APPROACH: Climb to 3700 direct NACIL and hold.

| | |
|--|--|
| MEMPHIS CENTER 126.85 281.55 | UNICOM 122.7 (CTAF) 0 |
|--|--|



| CATEGORY | A | B | C | D |
|----------|--------------------|---|----------------------------|----|
| LNAV MDA | 1760-1 490 (500-1) | | 1760-1 3/8 490 (500-1 3/8) | NA |
| CIRCLING | 1800-1 530 (600-1) | | 1860-1 1/2 590 (600-1 1/2) | NA |

ELEV 1270 TDZE 1270

MIRL Rwy 5-23 **0**
REIL Rwy 5 and 23 **0**

SC-1, 03 OCT 2024 to 31 OCT 2024

SC-1, 03 OCT 2024 to 31 OCT 2024