

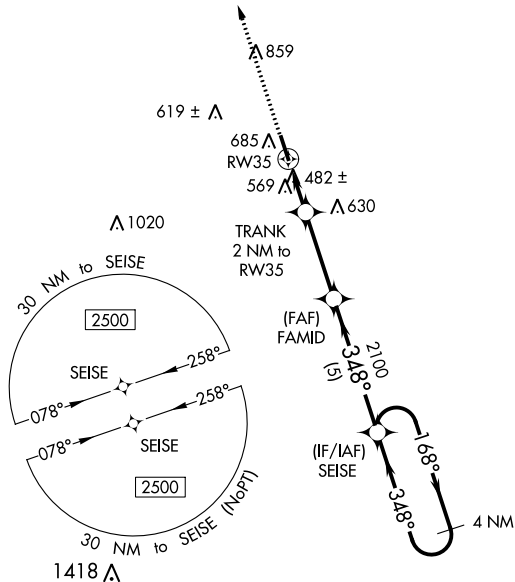
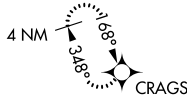
WAAS CH 82040 W35A	APP CRS 348°	Rwy Idg TDZE Apt Elev	5005 388 389
--	------------------------	-----------------------------	---

RNAV (GPS) RWY 35

TURNER COUNTY (75J)

▽ NA △ NA	When Fitzgerald altimeter setting not received, procedure NA. Rwy 35 helicopter visibility reduction below 1 SM NA. DME/DME RNP-0.3 NA. Procedure NA at night.	MISSED APPROACH: Climb to 2500 direct CRAGS and hold.
----------------------------	--	---

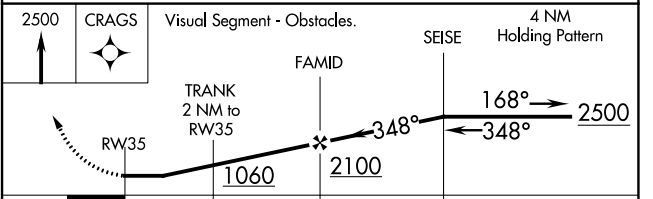
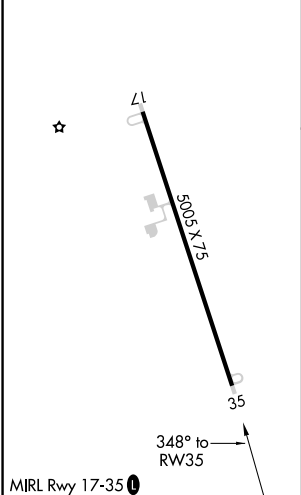
FZG AWOS-3 118.625	JACKSONVILLE CENTER 125.75 363.075	UNICOM 122.7 (CTAF) 0
------------------------------	--	---------------------------------



SE-4, 03 OCT 2024 to 31 OCT 2024

SE-4, 03 OCT 2024 to 31 OCT 2024

ELEV 389	TDZE 388
----------	----------



CATEGORY	A	B	C	D
LP MDA	780-1	392 (400-1)	780-1 $\frac{1}{8}$	392 (400-1 $\frac{1}{8}$)
LNAV MDA	880-1	492 (500-1)	880-1 $\frac{3}{8}$	492 (500-1 $\frac{3}{8}$)
C CIRCLING	1100-1	711 (800-1)	1140-2 $\frac{1}{4}$ 751 (800-2 $\frac{1}{4}$)	1260-2 $\frac{3}{4}$ 871 (900-2 $\frac{3}{4}$)