

APP CRS	Rwy Idg	N/A
290°	TDZE	N/A
	Apt Elev	2254

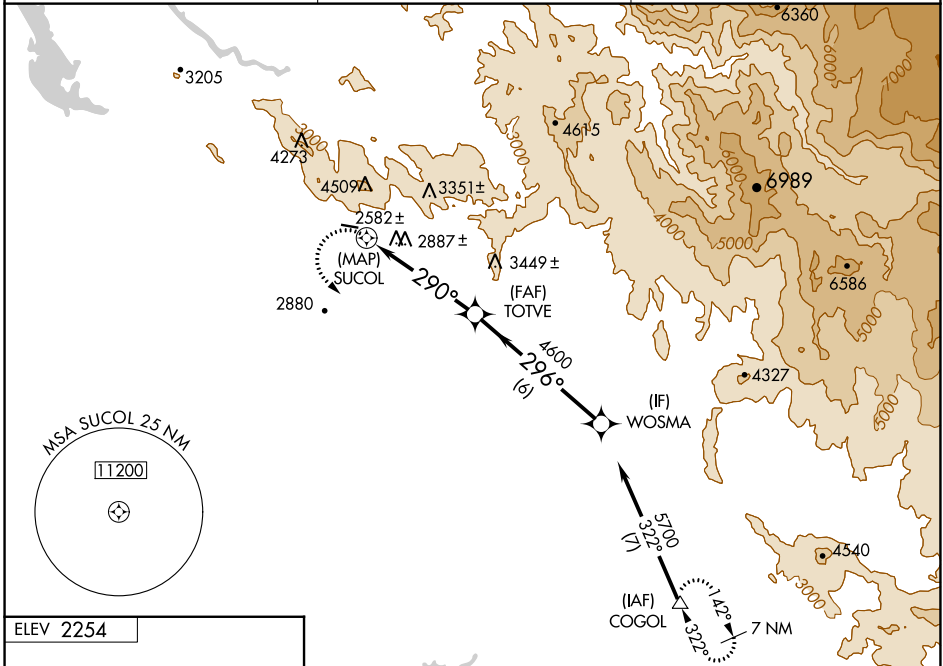
# RNAV (GPS)-A

MARIPOSA-YOSEMITE (MPI)

**▽** DME/DME RNP-0.3 NA.  
**△** NA Circling NA north of Rwy 8-26. Procedure NA at night. When local altimeter setting not received, use Atwater altimeter setting and increase all MDA 360 feet.

**MISSED APPROACH:** Climbing left turn to 7000 direct COGOL and hold.

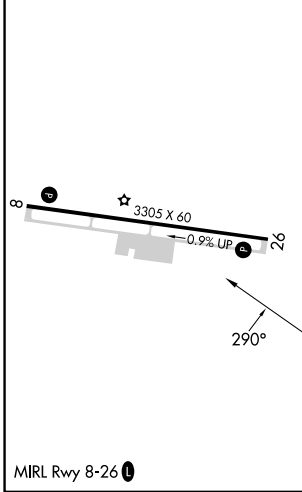
AWOS-3 <b>135.6</b>	OAKLAND CENTER <b>121.25 327.0</b>	UNICOM <b>122.7 (CTAF) 0</b>
------------------------	---------------------------------------	---------------------------------



SW-2, 03 OCT 2024 to 31 OCT 2024

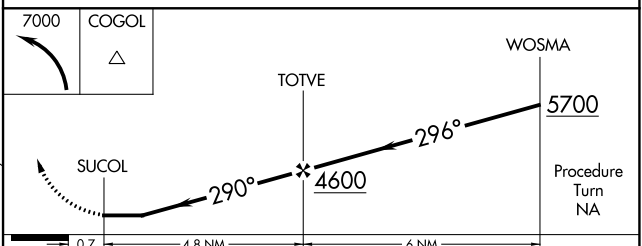
SW-2, 03 OCT 2024 to 31 OCT 2024

ELEV 2254



MIRL Rwy 8-26 0

Procedure NA for arrival at COGOL via V459 southeast bound.



CATEGORY	A	B	C	D
<b>C</b> CIRCLING	3900-1¼ 1646 (1700-1¼)	3900-1½ 1646 (1700-1½)	NA	