

APP CRS	Rwy Idg 2298
067°	TDZE 41
	Apt Elev 41

RNAV (GPS) RWY 7

FALMOUTH AIRPARK (5B6)

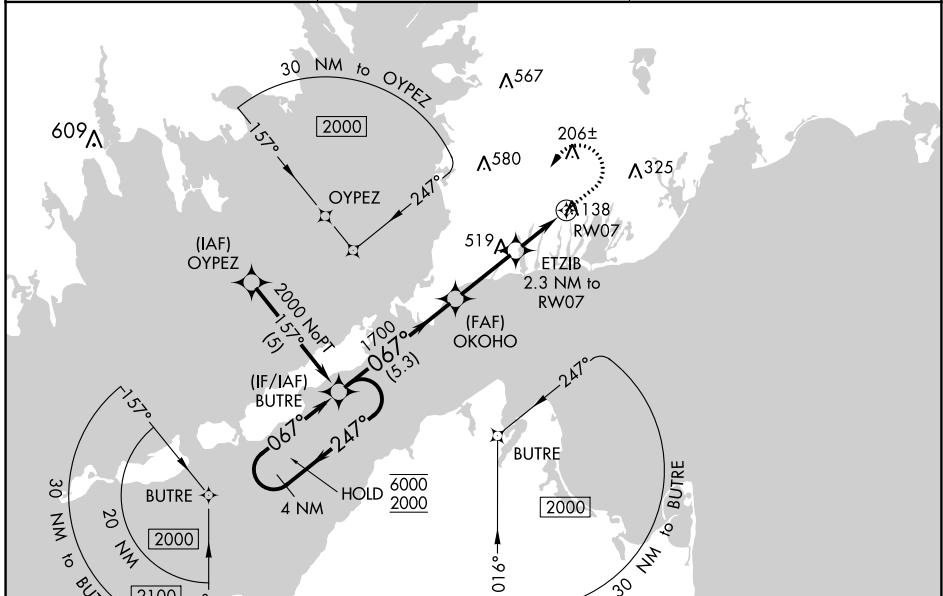
RNP APCH - GPS.

▼ Rwy 7 helicopter visibility reduction below 1 SM NA. Use Cape Cod Coast Guard Air Station altimeter setting. When not received, procedure NA. Procedure NA at night.

▲ NA

MISSED APPROACH: Climb to 800 then climbing left turn to 2000 direct BUTRE and hold.

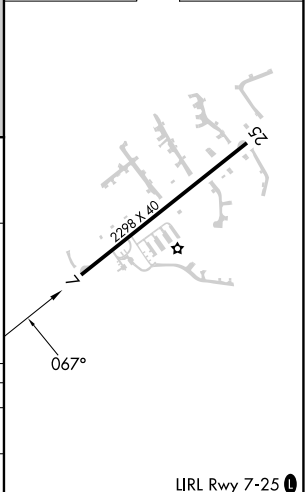
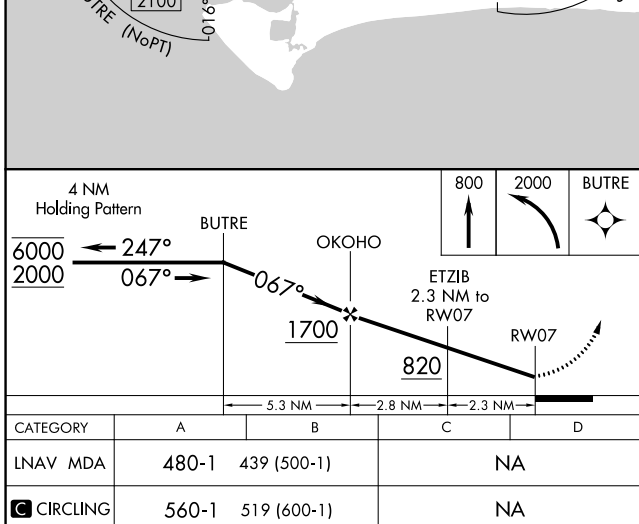
BOSTON APP CON 118.2	UNICOM 123.075 (CTAF)	122.7 0
--------------------------------	---------------------------------	-----------------------



NE-1, 03 OCT 2024 to 31 OCT 2024

NE-1, 03 OCT 2024 to 31 OCT 2024

ELEV 41	TDZE 41
----------------	----------------



CATEGORY	A	B	C	D
LNVA MDA	480-1	439 (500-1)		NA
C CIRCLING	560-1	519 (600-1)		NA

LIRL Rwy 7-25 **0**