

# RNAV (GPS) RWY 20

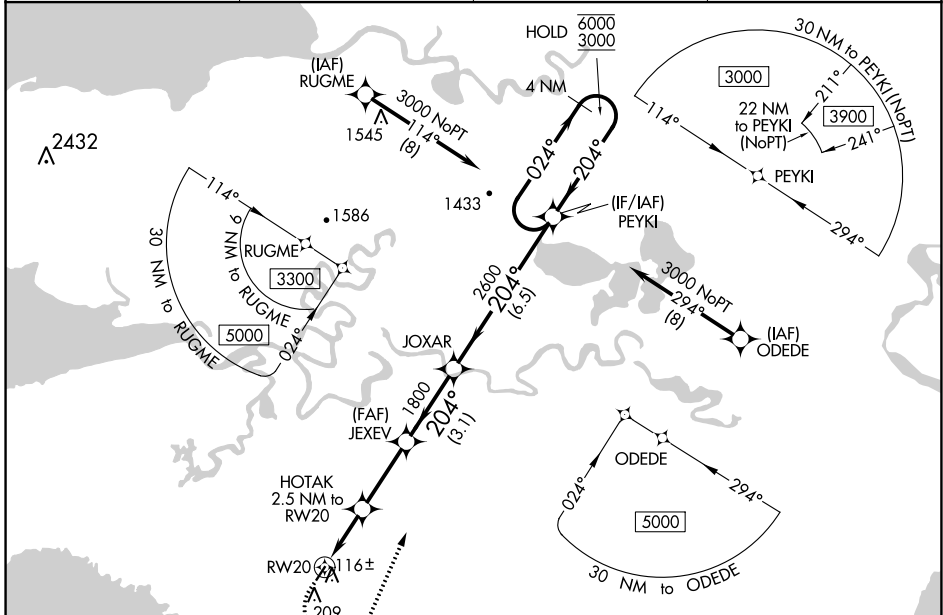
CHEVAK (VAK)(PAVA)

APP CRS	Rwy Idg	<b>3220</b>
<b>204°</b>	TDZE	<b>61</b>
	Apt Elev	<b>61</b>

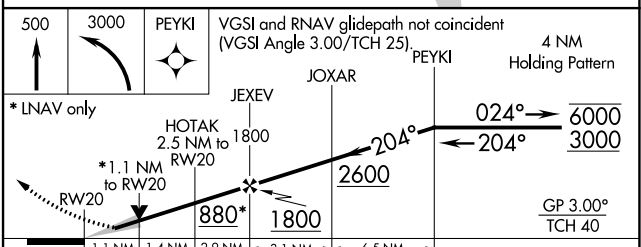
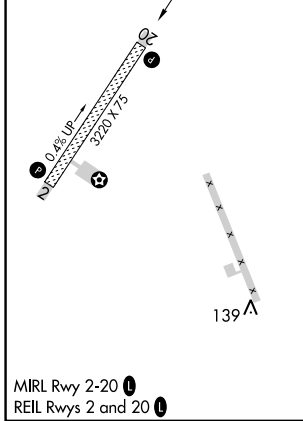
RNP APCH.  
 For uncompensated Baro-VNAV systems, LNAV/VNAV NA below -20°C or above 54°C.

MISSED APPROACH: Climb to 500. Then climbing left turn to 3000 direct PEYKI and hold.

AWOS-3P <b>120.625</b>	ANCHORAGE CENTER <b>124.5</b>	UNICOM <b>122.8</b>	CTAF <b>123.0</b>
---------------------------	----------------------------------	------------------------	----------------------



ELEV 61	TDZE 61
---------	---------



CATEGORY	A	B	C	D
LNAV/VNAV DA		311-1	250 (300-1)	
LNAV MDA		420-1	359 (400-1)	
<input checked="" type="checkbox"/> CIRCLING	520-1	459 (500-1)	520-1½ 459 (500-1½)	700-2 639 (700-2)

AK, 05 SEP 2024 to 31 OCT 2024

AK, 05 SEP 2024 to 31 OCT 2024