

WAAS CH <b>86344</b> W <b>18A</b>	APP CRS <b>182°</b>	Rwy Idg <b>3205</b> TDZE <b>189</b> Apt Elev <b>189</b>
---	------------------------	---

# RNAV (GPS) RWY 18

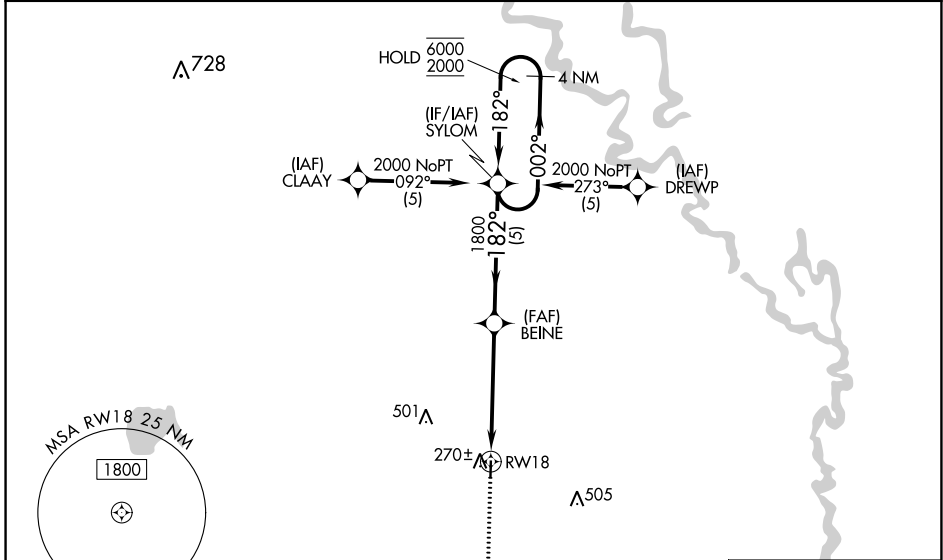
DEWITT MUNI/WHITCOMB FLD (5M1)

RNP APCH - GPS.

**⚠** Rwy 18 helicopter visibility reduction below  $\frac{3}{4}$  SM NA. Baro-VNAV NA. Use Stuttgart altimeter setting; when not received, use Pine Bluff altimeter setting and increase LPV DA to 515 feet, LNAV/VNAV DA to 515 feet, and increase all MDAs 20 feet.

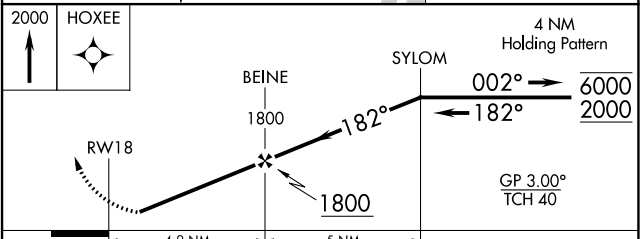
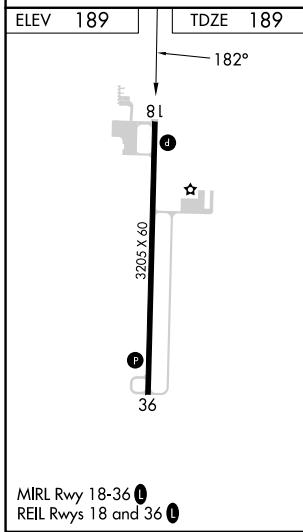
**⚠** NA MISSED APPROACH: Climb to 2000 direct HOXEE and hold.

SGT AWOS-3PT <b>119.025</b>	MEMPHIS CENTER <b>135.3 335.8</b>	CTAF <b>122.9</b>
--------------------------------	--------------------------------------	----------------------



SC-1, 03 OCT 2024 to 31 OCT 2024

SC-1, 03 OCT 2024 to 31 OCT 2024



CATEGORY	A	B	C	D
LPV DA	500-1	311 (400-1)	NA	
LNAV/VNAV DA	500-1	311 (400-1)	NA	
LNAV MDA	720-1	531 (600-1)	NA	