

WAAS CH 82039 W13A	APP CRS 132°	Rwy Idg TDZE Apt Elev	5500 4227 4264
--	------------------------	-----------------------------	---

RNAV (GPS) RWY 13

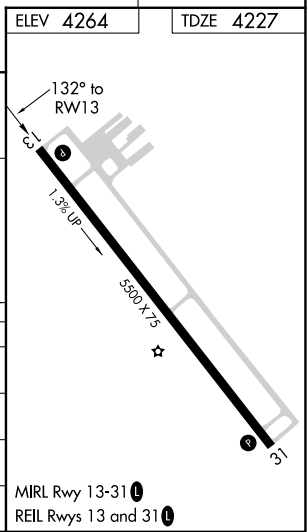
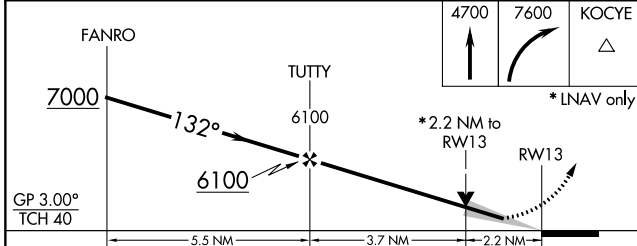
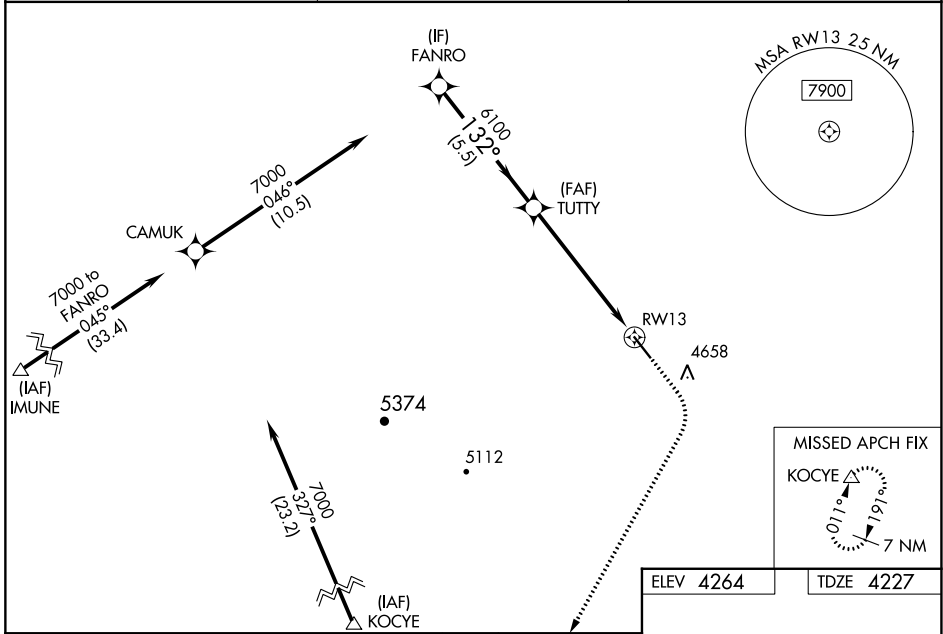
HULETT MUNI (W43)

RNP APCH.

⚠ For uncompensated Baro-VNAV systems, procedure NA below -23°C or above 53°C. Procedure NA at night. Baro-VNAV and VDP NA when using Gillette altimeter setting. When local altimeter setting not received, use Gillette altimeter setting and increase LPV DA to 4662 feet; LNAV/VNAV DA to 4807 feet, and all visibilities ½ SM. Increase all MDA 120 feet and LNAV Cat C/D visibility ½ SM, Circling Cat A/B ¼ SM, and Cat C ½ SM.

MISSED APPROACH:
Climb to 4700 then climbing right turn to 7600 direct KOCYE and hold.

AWOS-3PT 128.775	DENVER CENTER 127.95 338.2	UNICOM 122.8 (CTAF) 📻
----------------------------	--------------------------------------	--



CATEGORY	A	B	C	D
LPV DA		4542-1½	315 (300-1½)	
LNAV/VNAV DA		4687-1¾	460 (500-1¾)	
LNAV MDA	5100-1 873 (900-1)	5100-1¼ 873 (900-1¼)	5100-2½	873 (900-2½)
C CIRCLING	5100-1 836 (900-1)	5100-1¼ 836 (900-1¼)	5100-2½ 836 (900-2½)	5400-3 1136 (1200-3)

NW-1, 03 OCT 2024 to 31 OCT 2024

NW-1, 03 OCT 2024 to 31 OCT 2024