

APP CRS <b>249°</b>	Rwy Idg TDZE Apt Elev	<b>3050</b> <b>1755</b> <b>1755</b>
------------------------	-----------------------------	-------------------------------------------

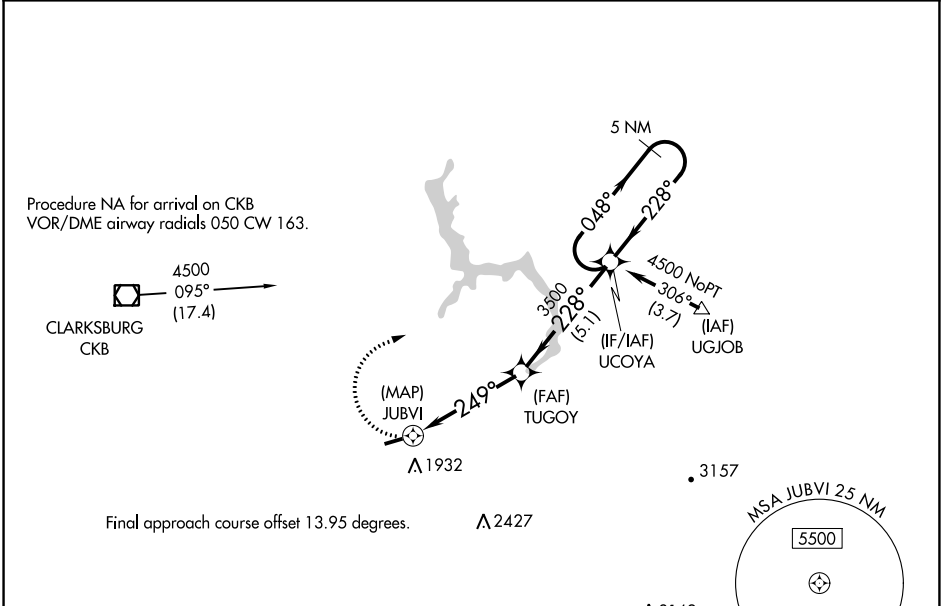
# RNAV (GPS) RWY 26

PHILIPPI/BARBOUR COUNTY RGNL (79D)

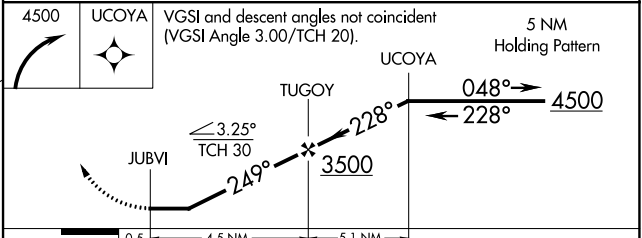
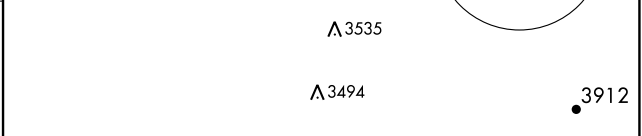
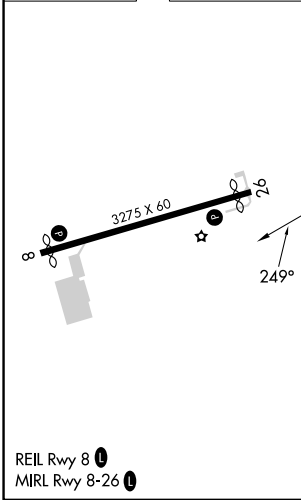
**▼** Rwy 26 helicopter visibility reduction below 1 SM NA.  
**▲ NA** DME/DME RNP-0.3 NA. Procedure NA at night.  
 Use Clarksburg altimeter setting, when not received,  
 use Buckhannon altimeter setting.

MISSED APPROACH: Climbing right  
 turn to 4500 direct UCOYA and hold.

CKB ASOS <b>127.825</b>	CLARKSBURG APP CON ★ <b>121.15 284.65</b>	CTAF <b>122.9 0</b>
----------------------------	----------------------------------------------	------------------------



ELEV 1755	TDZE 1755
-----------	-----------



CATEGORY	A	B	C	D
LNAV MDA	2460-1	705 (800-1)	NA	
<b>C</b> CIRCLING	2520-1 765 (800-1)	2520-1¼ 765 (800-1¼)	NA	

NE-4, 03 OCT 2024 to 31 OCT 2024

NE-4, 03 OCT 2024 to 31 OCT 2024