

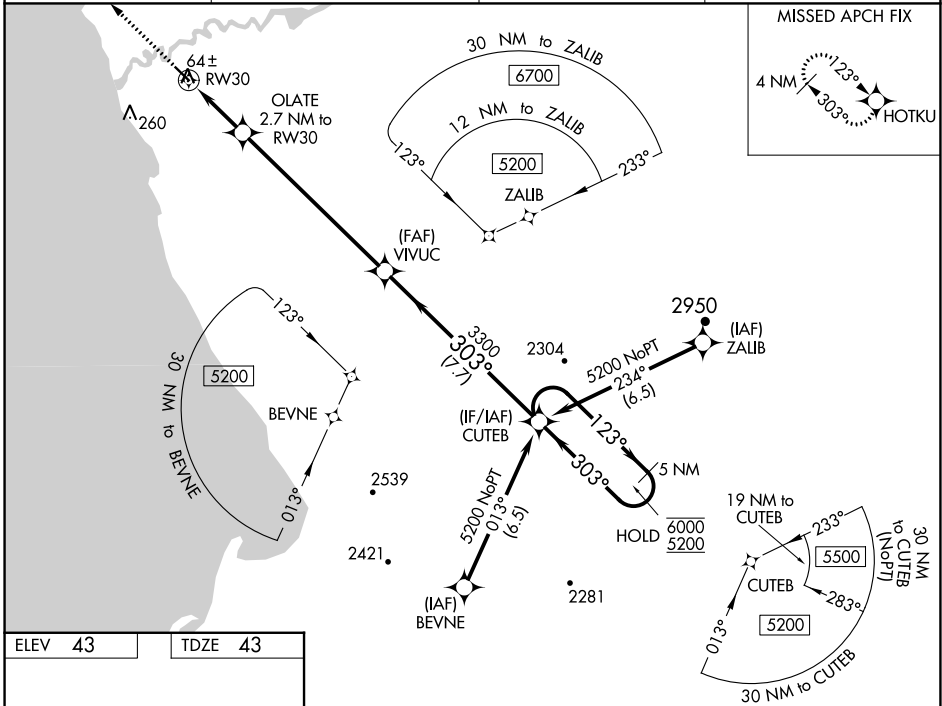
WAAS CH 58310 W30A	APP CRS 303°	Rwy ldg TDZE Apt Elev	4000 43 43
--	------------------------	-----------------------------	---------------------------------------

RNAV (GPS) RWY 30

QUINHAGAK (AQH) (PAQH)

RNP APCH - GPS.	MISSED APPROACH: Climb to 2500 direct HOTKU and hold, continue climb-in-hold to 2500.
<p>For uncompensated Baro-VNAV systems, LNAV/VNAV NA below -25°C or above 54°C.</p>	

AWOS-3P 121.575	ANCHORAGE CENTER 125.2 372.0	KENAI RADIO 122.1	UNICOM 122.8 (CTAF) 0
---------------------------	--	-----------------------------	---------------------------------



AK, 05 SEP 2024 to 31 OCT 2024

AK, 05 SEP 2024 to 31 OCT 2024

ELEV 43	TDZE 43
---------	---------

<p>MIRL Rwy 12-30 0</p>	2500	HOTKU	5 NM Holding Pattern			
	OLATE 2.7 NM to RW30	VIVUC	CUTEB			
	0.7 NM to RW30	3300	3300	123°	6000	5200
	RW30	960	3300	← 303°		
	0.7	2 NM	7.1 NM	7.7 NM		
CATEGORY	A	B	C	D		
LPV DA		293-1	250 (300-1)			
LNAV/VNAV DA		293-1	250 (300-1)			
LNAV MDA		320-1	277 (300-1)			
	400-1	500-1	580-1½	600-2		
	357 (400-1)	457 (500-1)	537 (600-1½)	557 (600-2)		