

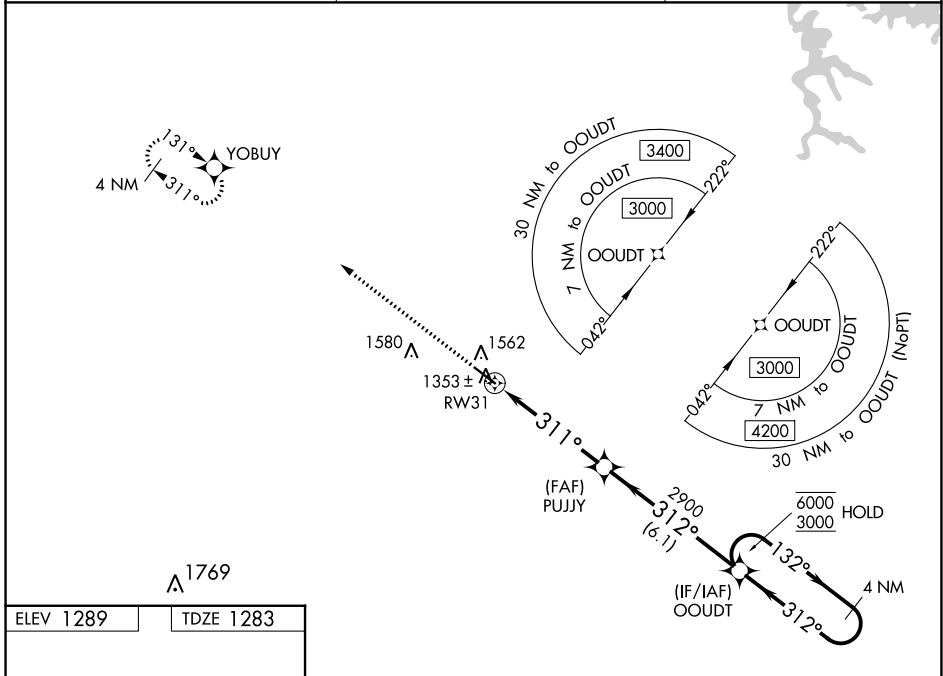
WAAS CH <b>99511</b> <b>W31A</b>	APP CRS <b>311°</b>	Rwy Idg TDZE Apt Elev	<b>5505</b> <b>1283</b> <b>1289</b>
--	------------------------	-----------------------------	---

# RNAV (GPS) RWY 31

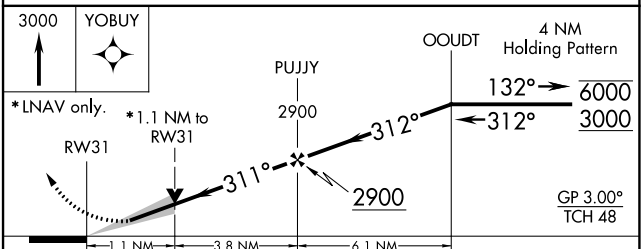
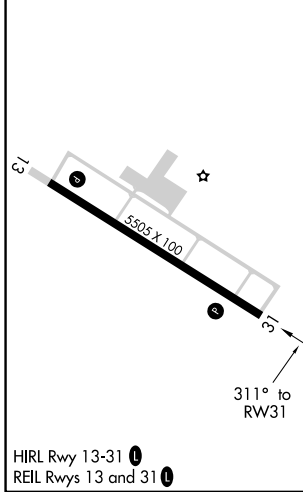
PAULDING NORTHWEST ATLANTA (PUJ)

RNP APCH.	MISSED APPROACH: Climb to 3000 direct YOBUY and hold.
<p>▼ ▲ For uncompensated Baro-VNAV systems, LNAV/VNAV NA below -17°C or above 54°C.</p>	

AWOS-3 <b>126.225</b>	ATLANTA APP CON <b>121.0 268.7</b>	UNICOM <b>123.075 (CTAF) 0</b>
--------------------------	---------------------------------------	-----------------------------------



ELEV 1289	TDZE 1283
-----------	-----------



CATEGORY	A	B	C	D
LPV DA	1483- <sup>3</sup> / <sub>4</sub> 200 (200- <sup>3</sup> / <sub>4</sub> )			
LNAV/VNAV DA	1582- <sup>7</sup> / <sub>8</sub> 299 (300- <sup>7</sup> / <sub>8</sub> )			
LNAV MDA	1680-1	397 (400-1)	1680-1 <sup>1</sup> / <sub>8</sub>	397 (400-1 <sup>1</sup> / <sub>8</sub> )
<b>C</b> CIRCLING	1880-1	591 (600-1)	1940-1 <sup>3</sup> / <sub>4</sub> 651 (700-1 <sup>3</sup> / <sub>4</sub> )	1940-2 651 (700-2)

SE-4, 03 OCT 2024 to 31 OCT 2024

SE-4, 03 OCT 2024 to 31 OCT 2024