

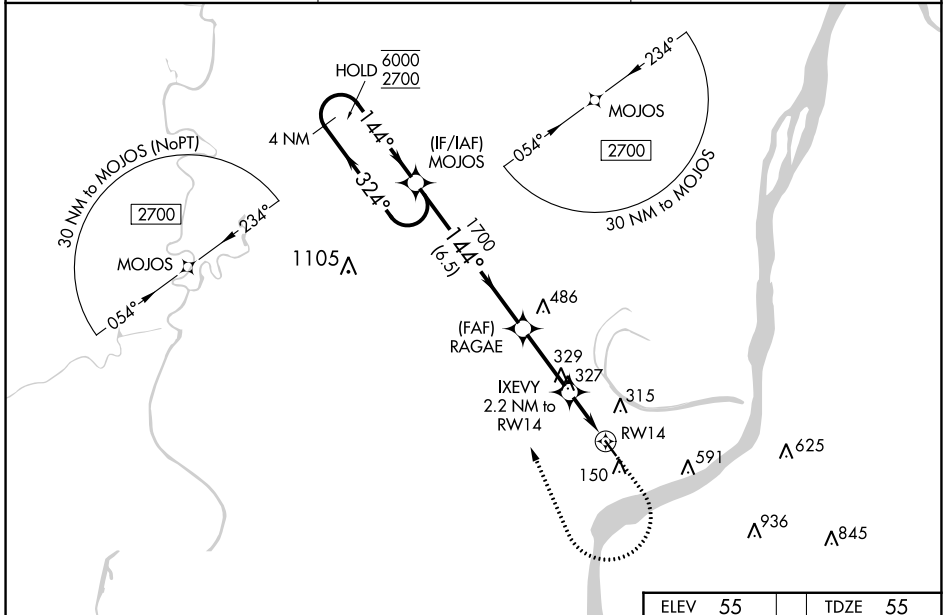
WAAS CH 78337 W14A	APP CRS 144°	Rwy Idg TDZE Apt Elev	3701 55 55
--	------------------------	-----------------------------	---------------------------------------

RNAV (GPS) RWY 14

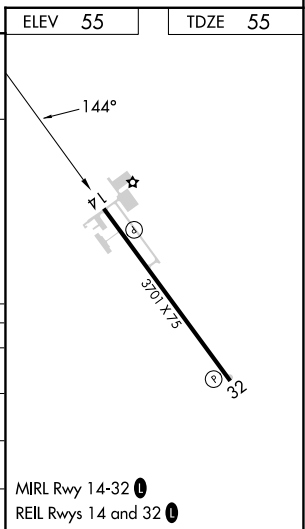
CONCORDIA PARISH (ØR4)

RNP APCH - GPS.	MISSED APPROACH: Climb to 1000 then climbing right turn to 3000 direct MOJOS and hold.
⚠ Rwy 14 helicopter visibility reduction below ¼ SM NA. For uncompensated Baro-VNAV systems, LNAV/VNAV NA below -15°C or above 54°C. When local altimeter setting not received, use Natchez altimeter setting and increase LPV DA to 408 feet; increase LNAV/VNAV DA to 540 feet and all visibilities ½ SM; increase all MDAs 60 feet and LNAV visibility Cat C ¼ SM, and Circling visibility Cat C ¼ SM. Baro-VNAV and VDP NA when using Natchez altimeter setting.	

AWOS-3 118.2	HOUSTON CENTER 120.975 299.6	UNICOM 122.8 (CTAF) 0
------------------------	--	---------------------------------



4 NM Holding Pattern		MOJOS	RAGAE	IXEVY	RWY 14
6000	← 324°	← 144°	1700	1.5 NM to RWY 14	1.5 NM
2700			800	2.2 NM to RWY 14	0.7 NM
GP 3.00°					
TCH 51					
		6.5 NM	2.8 NM	0.7 NM	1.5 NM
CATEGORY	A	B	C	D	
LPV DA		352-1	297 (300-1)	NA	
LNAV/VNAV DA		484-1¼	429 (500-1¼)	NA	
LNAV MDA	580-1	525 (600-1)	580-1½	NA	
			525 (600-1½)		
CIRCLING	680-1	625 (700-1)	960-2¾	NA	
			905 (1000-2¾)		



MIRL Rwy 14-32 0
REIL Rwy 14 and 32 0

SC-4, 03 OCT 2024 to 31 OCT 2024

SC-4, 03 OCT 2024 to 31 OCT 2024