

APP CRS	Rwy Idg	3701
339°	TDZE	55
	Apt Elev	55

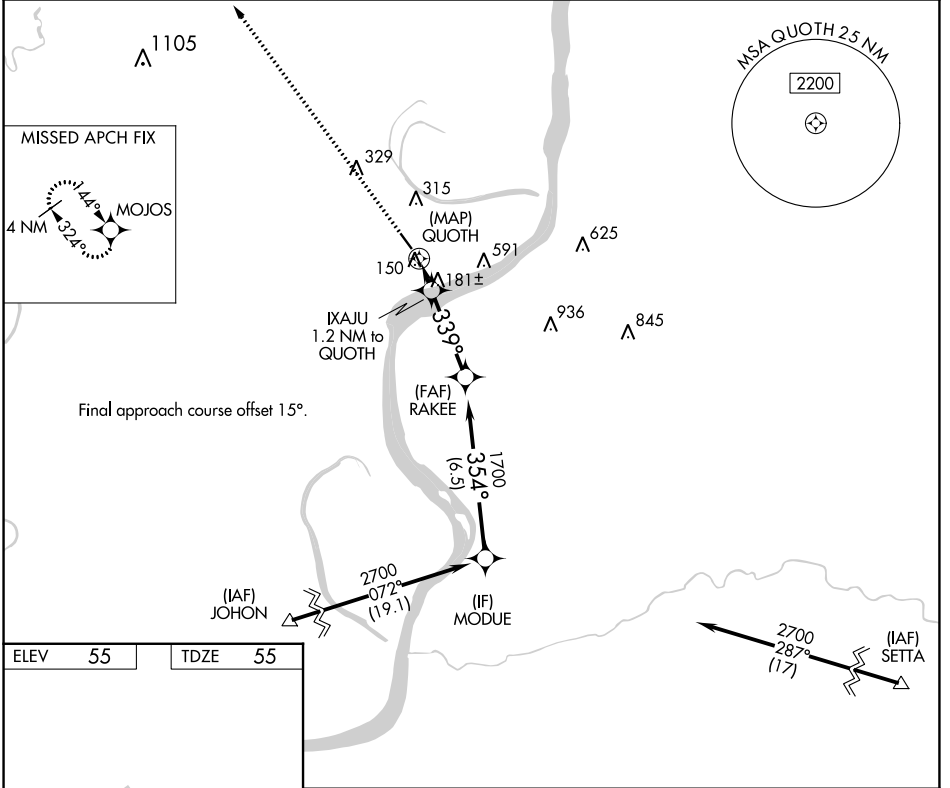
RNAV (GPS) RWY 32

CONCORDIA PARISH (ØR4)

NA DME/DME RNP-0.3 NA. Use Natchez altimeter setting; when not received, use Esler Rgnl altimeter setting and increase all MDA 60 feet and Circling Cat C visibility ¼ mile. Helicopter visibility reduction below ¾ SM NA.

MISSED APPROACH: Climb to 2700 direct MOJOS and hold.

AWOS-3 118.2	HOUSTON CENTER 120.975 299.6	UNICOM 122.8 (CTAF) Ø
------------------------	--	---------------------------------



ELEV	55	TDZE	55
------	----	------	----

REIL Rwy 14 and 32 Ø
MIRL Rwy 14-32 Ø

2700	MOJOS					
					MODUE	
	QUOTH	IXAJU 1.2 NM to QUOTH	RAKEE	1700	2700	
		640	339°	354°		
			≤ 3.00° TCH 50			
	0.5	1.2 NM	3.3 NM	6.5 NM		
CATEGORY	A		B		C	D
LNAV MDA	500-1		445 (500-1)		500-1 3/8 445 (500-1 3/8)	NA
C CIRCLING	680-1		625 (700-1)		960-2 3/4 905 (1000-2 3/4)	NA

SC-4, 03 OCT 2024 to 31 OCT 2024

SC-4, 03 OCT 2024 to 31 OCT 2024