

WAAS CH <b>42734</b> <b>W10A</b>	APP CRS <b>099°</b>	Rwy Idg TDZE Apt Elev	<b>5000</b> <b>182</b> <b>185</b>
--	------------------------	-----------------------------	---

# RNAV (GPS) RWY 10

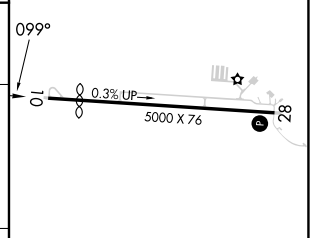
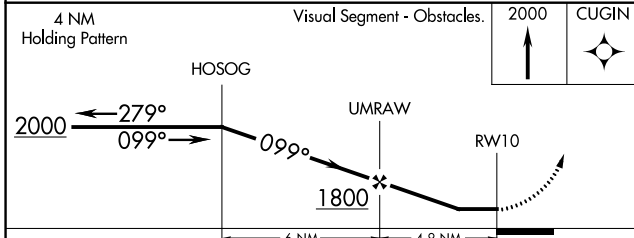
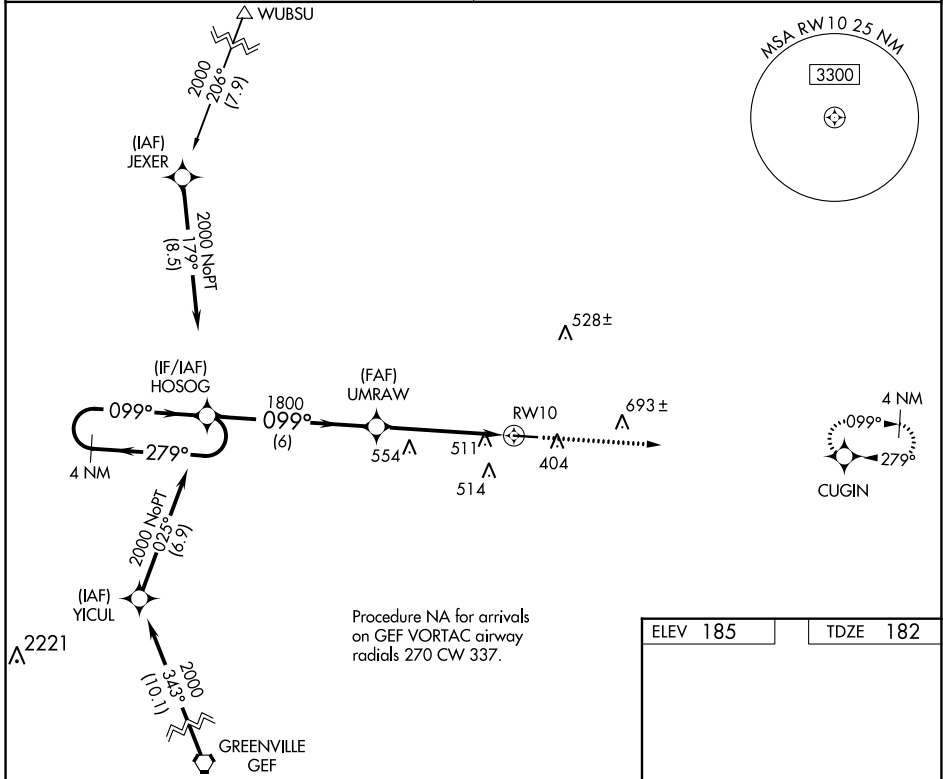
QUITMAN BROOKS COUNTY (4J5)

RNP APCH.

▼ Procedure NA at night. Rwy 10 helicopter visibility reduction below 1 SM NA.  
 ▲NA Use Valdosta altimeter setting; when not received, use Thomasville altimeter setting and increase all MDA 20 feet; increase LP Cat C visibility 1/8 SM.

MISSED APPROACH: Climb to 2000 direct CUGIN and hold.

VALDOSTA APP CON* <b>126.6</b>	CTAF <b>122.9</b>
-----------------------------------	----------------------



CATEGORY	A	B	C	D
LP MDA	740-1	558 (600-1)	740-1 5/8 558 (600-1 5/8)	NA
LNAV MDA	820-1	638 (700-1)	820-1 7/8 638 (700-1 7/8)	NA

MIRL Rwy 10-28

SE-4, 03 OCT 2024 to 31 OCT 2024

SE-4, 03 OCT 2024 to 31 OCT 2024