

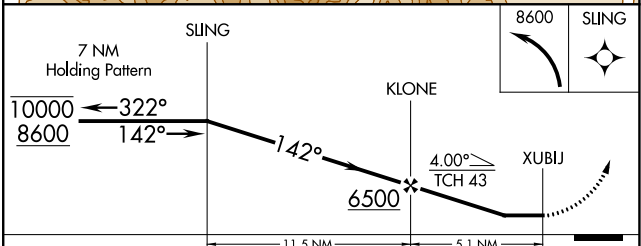
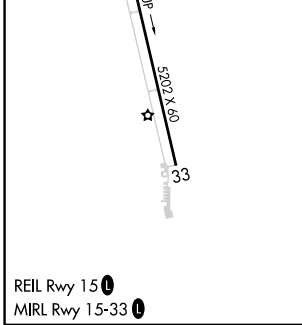
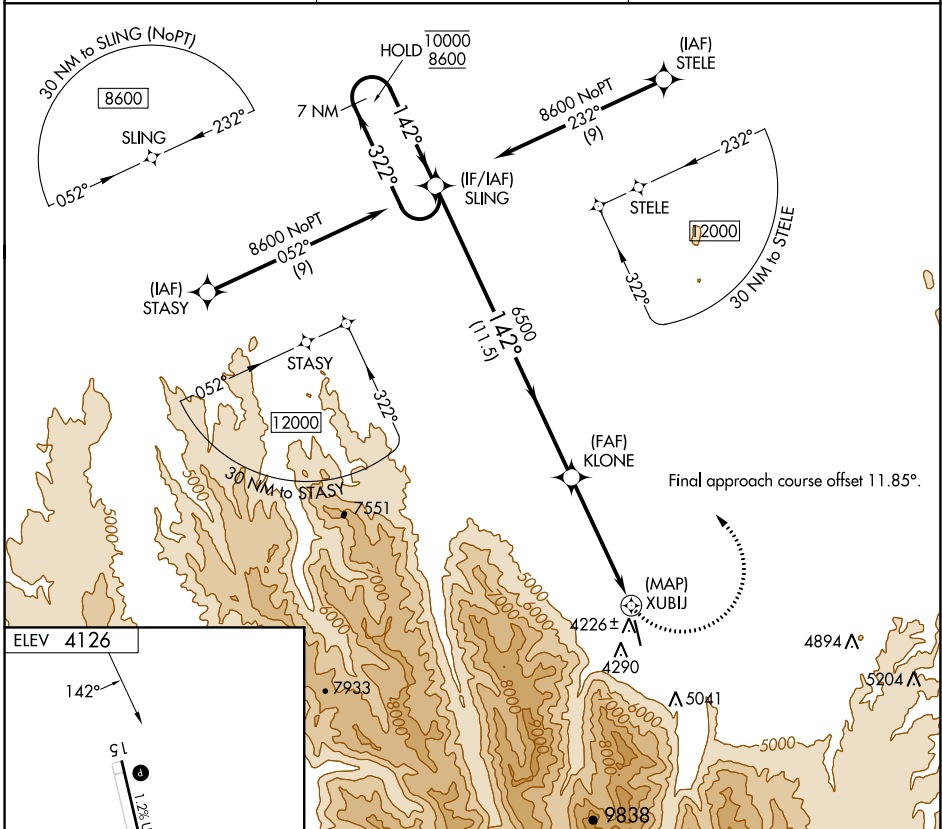
APP CRS	Rwy Idg	N/A
142°	TDZE	N/A
	Apt Elev	4126

RNAV (GPS)-A

JOSEPH STATE (JSY)

RNP APCH - GPS.	MISSED APPROACH: Climbing left turn to 8600 direct SLING and hold, continue climb-in-hold to 8600.
<p>⚠ Circling NA southwest of Rwy 15-33.</p> <p>⚠ Procedure NA at night.</p> <p>Rwy 15 and 33 helicopter visibility reduction below 1 SM NA.</p>	

AWOS-3P 123.775	SEATTLE CENTER 123.95 290.55	UNICOM 122.8 (CTAF) ①
---------------------------	--	---------------------------------



CATEGORY	A	B	C	D
<input checked="" type="checkbox"/> CIRCLING	5000-1¼ 874 (900-1¼)	5480-1½ 1354 (1400-1½)	NA	

NW-1, 03 OCT 2024 to 31 OCT 2024

NW-1, 03 OCT 2024 to 31 OCT 2024