

EDGEWOOD, MARYLAND

# COPTER RNAV (GPS) 185

AL-11589 (USA)

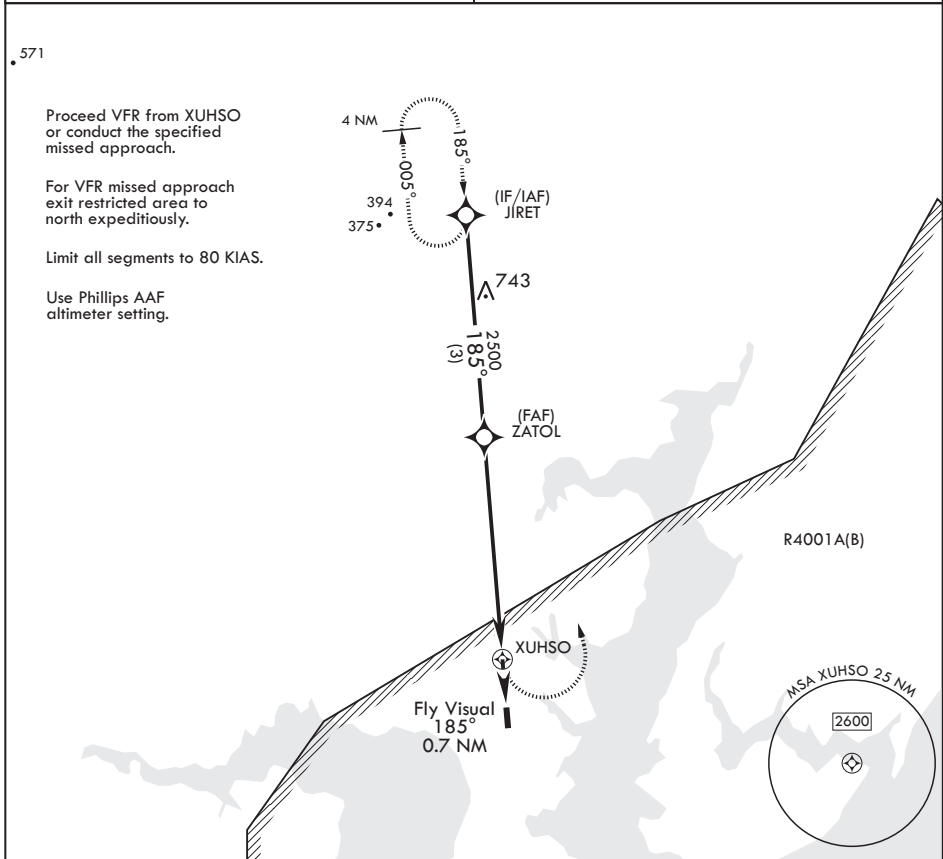
WEIDE AHP (ABERDEEN PROVING GROUND) (KEDG)

APCH CRS <b>185°</b>	Rwy Idg TDZE Arprt Elev	<b>1704</b> <b>N/A</b> <b>21</b>
-------------------------	-------------------------------	--

RNP APCH - GPS	MISSED APPROACH: Climbing left turn to 2500 direct JIRET and hold.
----------------	--

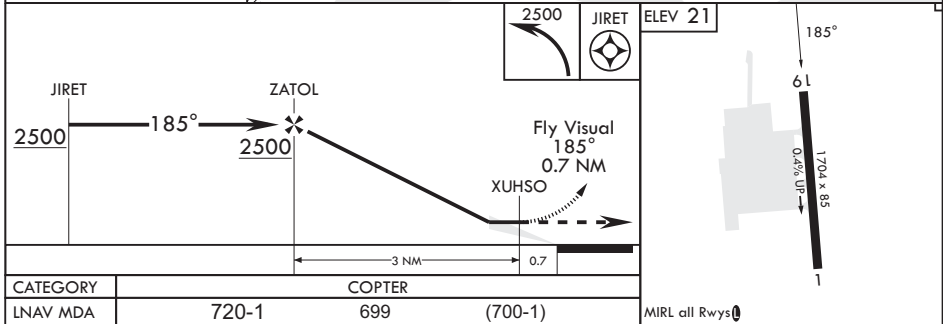
<p>▼</p> <p>▲ NA</p>	
----------------------	--

AWOS-AV <b>126.2 (CTAF)</b>	POTOMAC APP CON/DEP CON <b>125.525 291.625</b>
--------------------------------	---



NE-3, 03 OCT 2024 to 31 OCT 2024

NE-3, 03 OCT 2024 to 31 OCT 2024



EDGEWOOD, MARYLAND

39°24'N - 76°17'W

WEIDE AHP (ABERDEEN PROVING GROUND) (KEDG)

Amdt 1 23FEB23  
TERPS

# COPTER RNAV (GPS) 185