

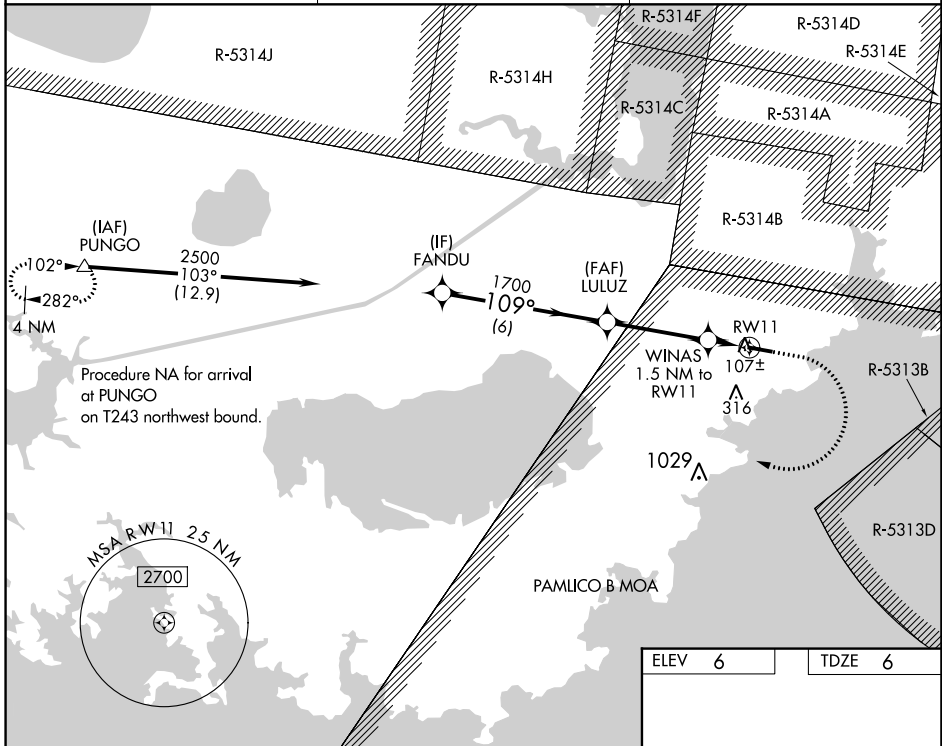
WAAS CH <b>40442</b> <b>W11A</b>	APP CRS <b>109°</b>	Rwy Idg TDZE Apt Elev	<b>4700</b> <b>6</b> <b>6</b>
--	------------------------	-----------------------------	-------------------------------------

# RNAV (GPS) RWY 11

HYDE COUNTY (7W6)

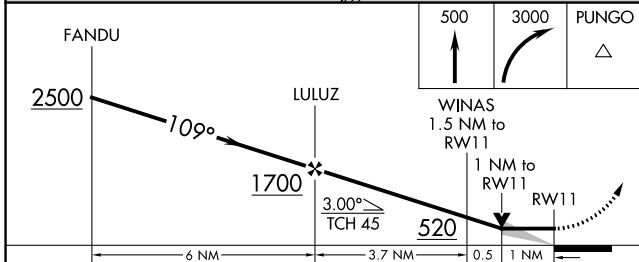
RNP APCH. ▼ ▲	MISSED APPROACH: Climb to 500 then climbing right turn 3000 direct PUNGO and hold.
---------------------	--

AWOS-3P <b>119.275</b>	CHERRY POINT APP CON <b>119.75 360.775</b>	UNICOM <b>122.7 (CTAF)</b> ①
---------------------------	---	---------------------------------

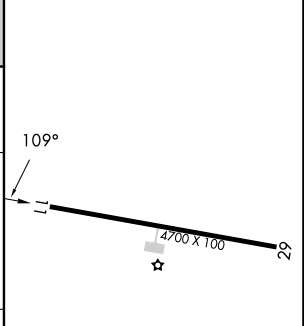


SE-2, 03 OCT 2024 to 31 OCT 2024

SE-2, 03 OCT 2024 to 31 OCT 2024



ELEV 6	TDZE 6
--------	--------



CATEGORY	A	B	C	D
LP MDA	360-1	354 (400-1)		NA
LNAV MDA	360-1	354 (400-1)		NA
② CIRCLING	420-1 414 (500-1)	460-1 454 (500-1)		NA

MIRL Rwy 11-29 ①