

(MARVN1.MARVN) 23166

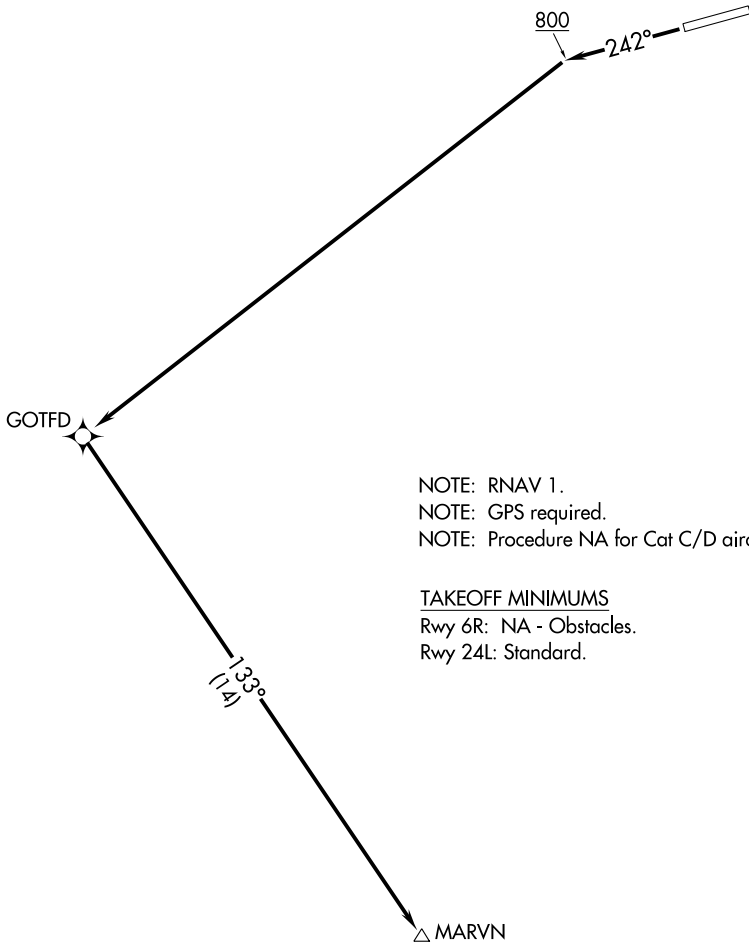
AL-11796 (FAA)

WILDER RUNWAY (Ø5K) (PAKX)
PORT ALSWORTH, ALASKA

MARVN ONE DEPARTURE (OBSTACLE) (RNAV)

ANCHORAGE CENTER
118.8 351.8

**TOP ALTITUDE:
ASSIGNED BY ATC**



NOTE: RNAV 1.
NOTE: GPS required.
NOTE: Procedure NA for Cat C/D aircraft.

TAKEOFF MINIMUMS
Rwy 6R: NA - Obstacles.
Rwy 24L: Standard.

TAKEOFF OBSTACLE NOTES

Rwy 24L: Trees beginning abeam DER, 93' left of centerline, up to 80' AGL/380' MSL.
Trees beginning abeam DER, 74' right of centerline, up to 80' AGL/380' MSL.

NOTE: Chart not to scale.

DEPARTURE ROUTE DESCRIPTION

TAKEOFF RUNWAY 24L: Climb on heading 242° to 800, then climb direct GOTFD, then turn left on track 133° to MARVN. Maintain ATC assigned altitude, expect clearance to filed altitude within 10 minutes after departure.

MARVN ONE DEPARTURE (OBSTACLE) (RNAV)
(MARVN1.MARVN) 07OCT21

PORT ALSWORTH, ALASKA
WILDER RUNWAY (Ø5K) (PAKX)

AK, 05 SEP 2024 to 31 OCT 2024

AK, 05 SEP 2024 to 31 OCT 2024