

# HI-TACAN X RWY 16

TACAN DYS Chan <b>63</b>	APCH CRS <b>169°</b>	Rwy ldg <b>13,500</b> TDZE <b>1790</b> Arprt Elev <b>1790</b>
-----------------------------	-------------------------	---

JAL-2 [USAF]

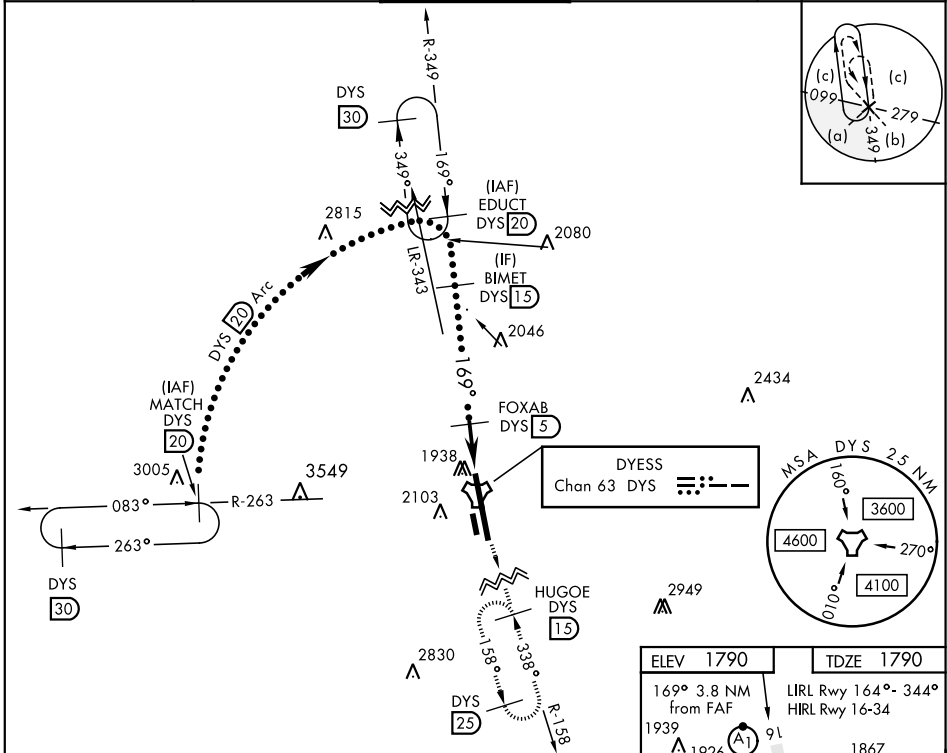
DYESS AFB (KDYS)

\* When ALS inop, increase CAT CDE vis to 1 1/4 miles.  
 \*\* Circling to other than Rwy 34 NA

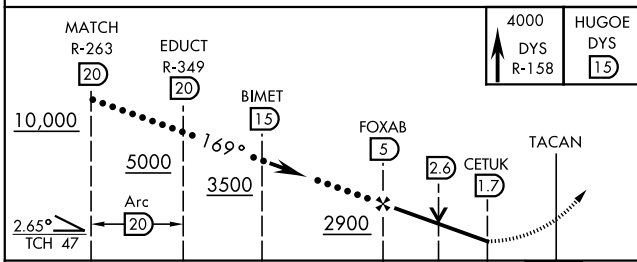


MISSED APPROACH: Climb to 4000 via  
 DYS TACAN R-158 to HUGOE and hold.

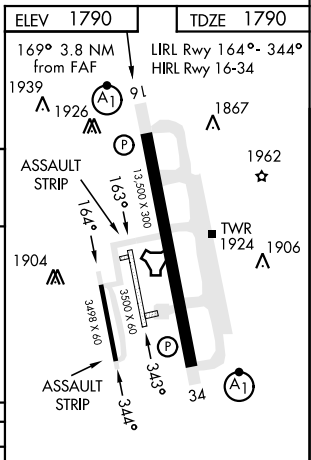
ATIS ★ <b>269.175</b>	ABILENE APP CON <b>125.0 338.3</b> EAST <b>127.2 282.3</b> WEST	DYESS TOWER <b>133.0 257.675</b>	GND CON <b>118.35 275.8</b>	ASR
--------------------------	---	-------------------------------------	--------------------------------	-----



EMERG SAFE ALT 100 NM 4600



CATEGORY	C	D	E
S-16*	2220/40	430	(500-34)
CIRCLING**	2460-1 3/4 670 (700-1 3/4)	2460-2 670 (700-2)	2460-2 1/4 670 (700-2 1/4)



FAF to MAP 3.3 NM					
Knots	120	140	160	180	200
Min:Sec	1:39	1:25	1:14	1:06	0:59

# HI-TACAN X RWY 16

SC-2, 31 OCT 2024 to 28 NOV 2024

SC-2, 31 OCT 2024 to 28 NOV 2024