

# TACAN W RWY 34

TACAN	DYS	APCH CRS	Rwy Idg	13,500
Chan	63	338°	TDZE	1788
			Arprt Elev	1790

AL-2 [USAF]

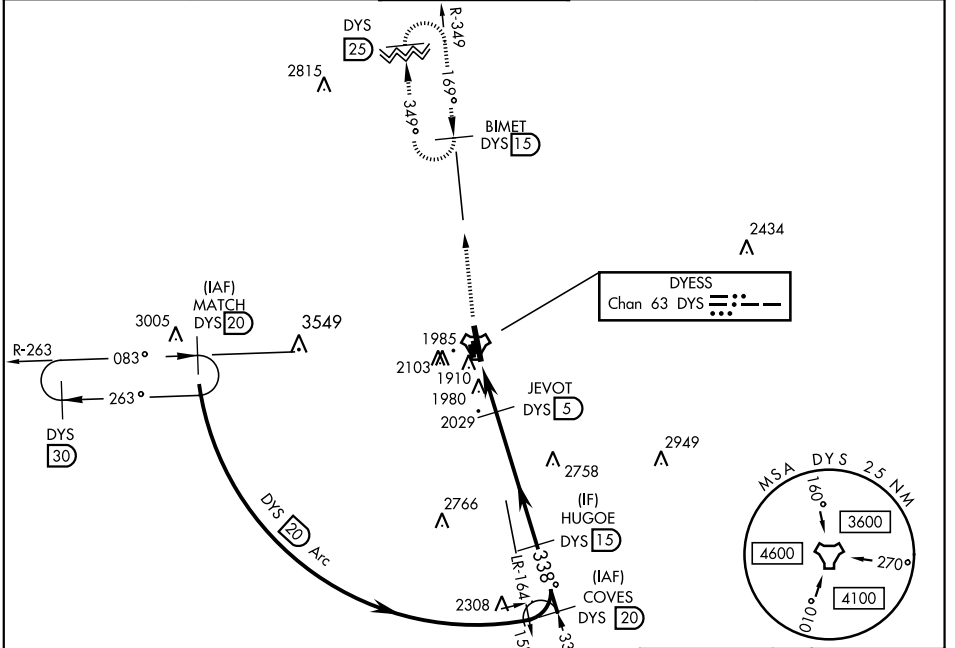
DYESS AFB (KDYS)

\* When ALS inop, increase CAT AB RVR to 55 and vis to 1 mile, CAT CDE vis to 1 1/8 miles.  
 \*\* Circling to other than RWY 16 NA



MISSED APPROACH: Climb to 4000 via  
 DYS TACAN R-349 to BIMET and hold.

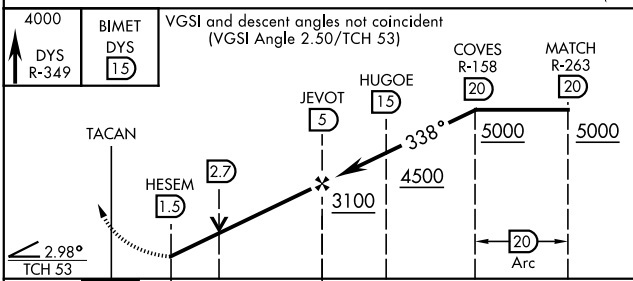
ATIS *	ABILENE APP CON	DYESS TOWER	GND CON	ASR
269.175	125.0 338.3 EAST 127.2 282.3 WEST	133.0 257.675	118.35 275.8	



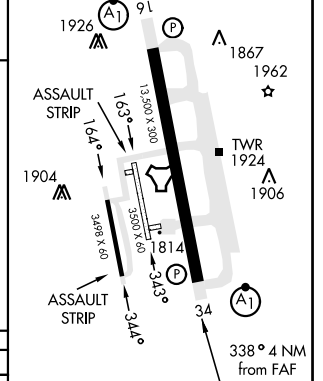
SC-2, 31 OCT 2024 to 28 NOV 2024

SC-2, 31 OCT 2024 to 28 NOV 2024

EMERG SAFE ALT 100 NM 4600



ELEV 1790	TDZE 1788
LIRL Rwy 164°-344° HIRL Rwy 16-34	



CATEGORY	A	B	C	D	E
S-34 *	2280/24 492 (500-1/2)		2280/50 492 (500-1)		
CIRCLING **	2300-1 510 (600-1)	2320-1 530 (600-1)	2460-1 1/4 670 (700-1 1/4)	2460-2 670 (700-2)	2460-2 1/4 670 (700-2 1/4)

FAF to MAP 3.5 NM					
Knots	60	90	120	150	180
Min:Sec	3:30	2:20	1:45	1:24	1:10

# TACAN W RWY 34