

APP CRS <b>214°</b>	Rwy Idg <b>10000</b>
	TDZE <b>5316</b>
	Apt Elev <b>5355</b>

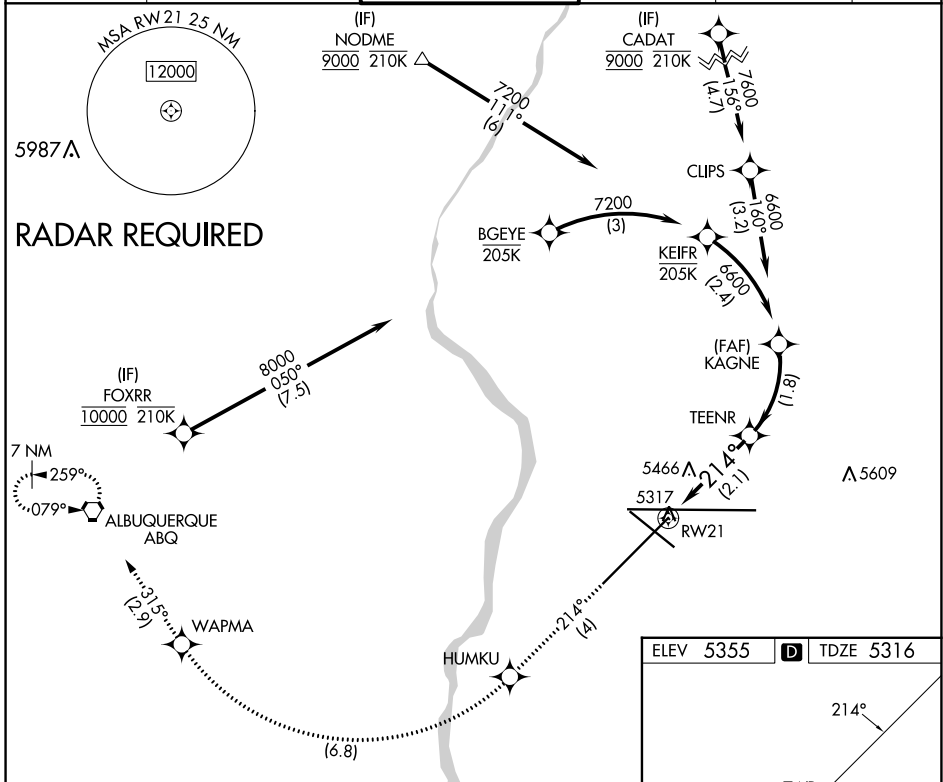
# RNAV (RNP) Y RWY 21

ALBUQUERQUE INTL SUNPORT (ABQ)

**ASR** For uncompensated Baro-VNAV systems, procedure NA below -12°C (11°F) or above 47°C (116°F). RF Required. GPS Required.

**MISSED APPROACH:** Climb to 8000 on track 214° to HUMKU, right turn to WAPMA, then on track 315° to ABQ VORTAC and hold.

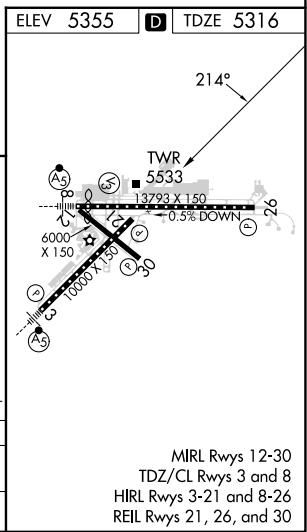
D-ATIS <b>118.0 257.7</b>	ALBUQUERQUE APP CON <b>123.9 354.1</b>	ALBUQUERQUE TOWER <b>120.3 351.9</b>	GND CON <b>121.9 348.6</b>	CLNC DEL <b>119.2 259.3</b>	CPDLC
------------------------------	---	---	-------------------------------	--------------------------------	-------



SW-1, 31 OCT 2024 to 28 NOV 2024

SW-1, 31 OCT 2024 to 28 NOV 2024

8000 fr 214°	HUMKU	WAPMA	fr 315°	ABQ	KAGNE 6600
See planview for multiple IF locations.					
RW21		TEENR 6030		6600	
VGSi and RNAV glidepath not coincident (VGSi Angle 3.00/TCH 74).			GP 3.00° TCH 55		
2.1 NM		1.8 NM			



CATEGORY	A	B	C	D
RNP 0.30 DA		5758-1½	442 (500-1½)	

## AUTHORIZATION REQUIRED

MIRL Rwy 12-30  
TDZ/CL Rwy 3 and 8  
HIRL Rwy 3-21 and 8-26  
REIL Rwy 21, 26, and 30