

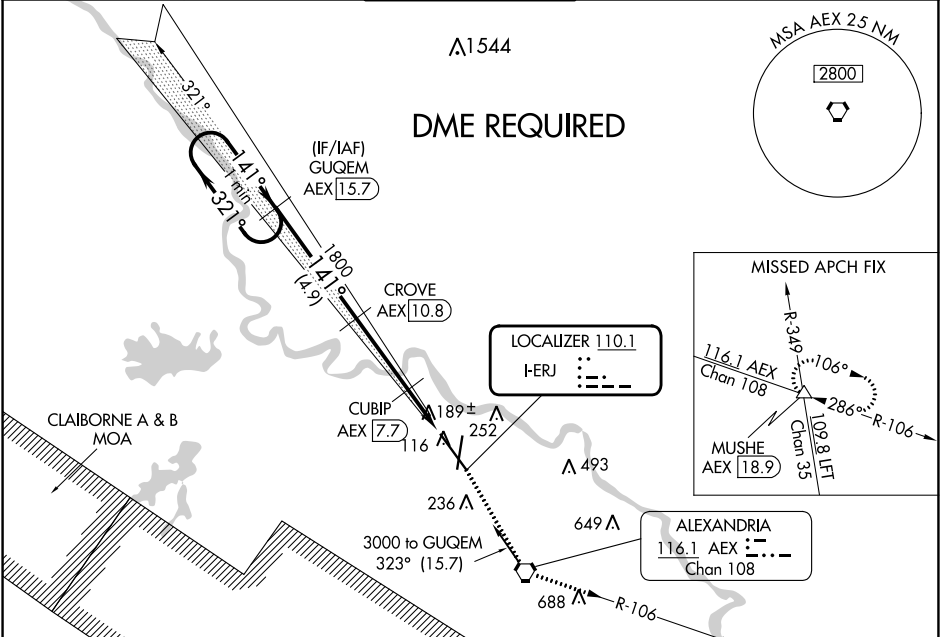
LOC I-ERJ <b>110.1</b>	APP CRS <b>141°</b>	Rwy Idg <b>9352</b> TDZE <b>85</b> Apt Elev <b>89</b>
---------------------------	------------------------	---

# ILS or LOC RWY 14

ALEXANDRIA INTL (AEX)

<p><b>⚠</b> DME from AEX VORTAC. Simultaneous reception of I-ERJ and AEX DME required. When R-3801 B active, RADAR and DME required. DME required.</p>	<p>MALSR</p>	<p>MISSED APPROACH: Climb to 4000 direct AEX VORTAC and on AEX VORTAC R-106 to MUSHE INT/18.9 DME and hold.</p>
--	--------------	---

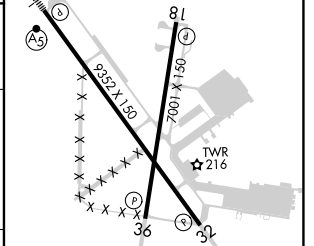
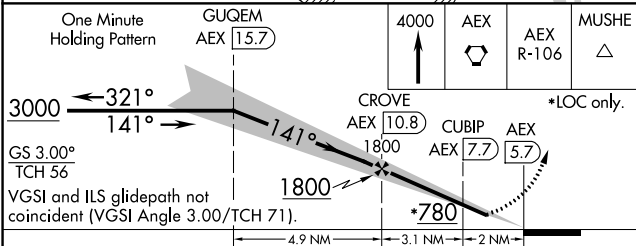
ASOS <b>123.975</b>	POLK APP CON <b>125.4 254.8</b>	ALEXANDRIA TOWER <b>127.35</b> (CTAF) <b>269.2</b>	GND CON <b>121.9 372.0</b>	CLNC DEL <b>121.9</b>
------------------------	------------------------------------	---	-------------------------------	--------------------------



SC-4, 31 OCT 2024 to 28 NOV 2024

SC-4, 31 OCT 2024 to 28 NOV 2024

ELEV <b>89</b>	<b>D</b>	TDZE <b>85</b>
----------------	----------	----------------



CATEGORY	A	B	C	D
S-ILS 14		<b>346/24</b>	<b>261 (300-½)</b>	
S-LOC 14		<b>460/24</b>	<b>375 (400-½)</b>	<b>460/40</b> <b>375 (400-¾)</b>
CIRCLING	<b>540-1</b> <b>451 (500-1)</b>	<b>560-1</b> <b>471 (500-1)</b>	<b>700-1¾</b> <b>611 (700-1¾)</b>	<b>860-2½</b> <b>771 (800-2½)</b>

TDZL Rwy 14

REIL Rws 18, 32 and 36

HIRL Rws 18-36 and 14-32