

WAAS CH <b>50110</b> <b>W32A</b>	APP CRS <b>321°</b>	Rwy Idg <b>9352</b> TDZE <b>89</b> Apt Elev <b>89</b>
--	------------------------	---

# RNAV (GPS) RWY 32

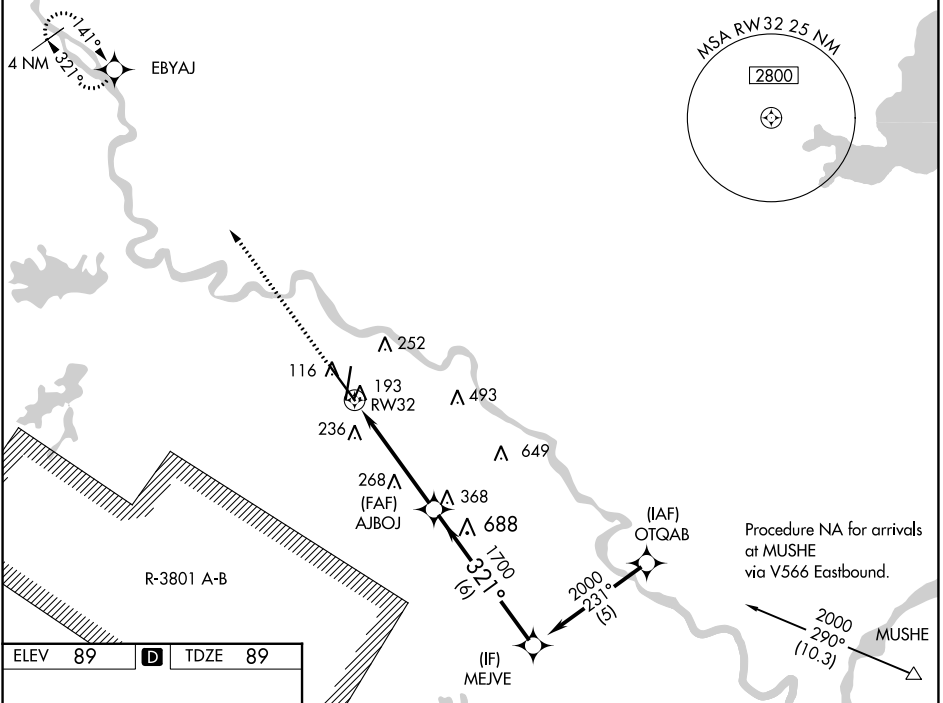
ALEXANDRIA INTL (AEX)

RNP APCH-GPS.

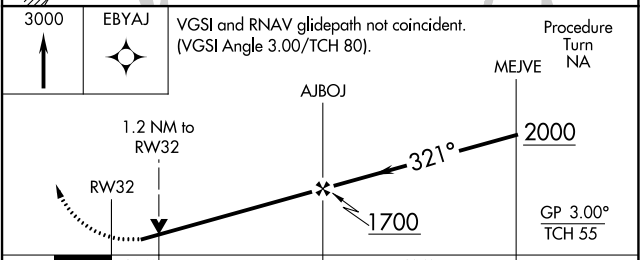
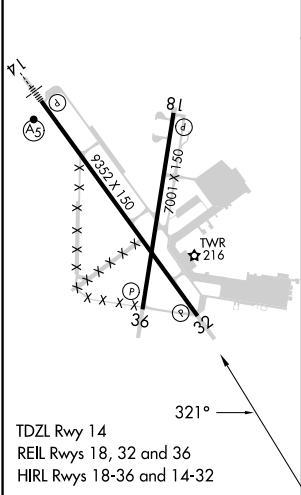
**▼** Rwy 32 helicopter visibility reduction below 3/4 SM NA. Baro-VNAV NA below -15°C.  
**▲** When R-3801A-B active, RADAR required.

MISSED APPROACH: Climb to 3000  
direct EBYAJ WP and hold.

ASOS <b>123.975</b>	POLK APP CON <b>125.4 254.8</b>	ALEXANDRIA TOWER <b>127.35 (CTAF) 269.2</b>	GND CON <b>121.9 372.0</b>	CLNC DEL <b>121.9</b>
------------------------	------------------------------------	--	-------------------------------	--------------------------



ELEV <b>89</b>	<b>D</b>	TDZE <b>89</b>
----------------	----------	----------------



CATEGORY	A	B	C	D
LPV DA		340/50	251 (300-1)	
LNAV/VNAV DA		460/60	371 (400-1¼)	
LNAV MDA	520/55	431 (500-1)	520-1¼ 431 (500-1¼)	520-1½ 431 (500-1½)
CIRCLING	540-1 451 (500-1)	560-1 471 (500-1)	700-1¾ 611 (700-1¾)	860-2½ 771 (800-2½)

SC-4, 31 OCT 2024 to 28 NOV 2024

SC-4, 31 OCT 2024 to 28 NOV 2024