

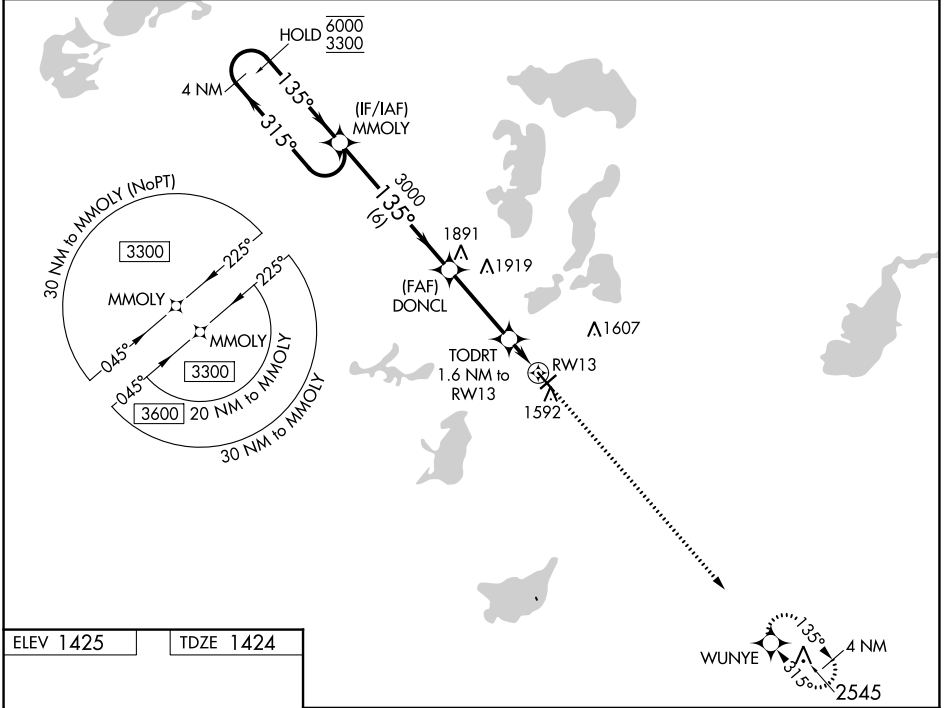
WAAS CH <b>50245</b> <b>W13A</b>	APP CRS <b>135°</b>	Rwy Idg TDZE Apt Elev	<b>5099</b> <b>1424</b> <b>1425</b>
--	------------------------	-----------------------------	---

# RNAV (GPS) RWY 13

ALEXANDRIA RGNL/CHANDLER FLD (A.XN)

RNP APCH - GPS.	MISSED APPROACH: Climb to 3600 direct WUNYE and hold.
<p>▼ For uncompensated Baro-VNAV systems, LNAV/VNAV NA below -24°C or above 54°C.</p>	

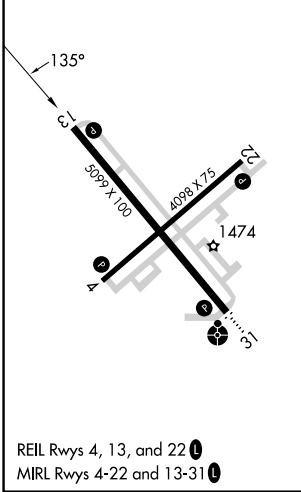
ASOS <b>118.375</b>	MINNEAPOLIS CENTER <b>126.1 269.2</b>	UNICOM <b>123.0 (CTAF) 0</b>
------------------------	--	---------------------------------



NC-1, 31 OCT 2024 to 28 NOV 2024

NC-1, 31 OCT 2024 to 28 NOV 2024

ELEV 1425	TDZE 1424
-----------	-----------



REIL Rws 4, 13, and 22 0  
MIRL Rws 4-22 and 13-31 0

4 NM Holding Pattern				MMOLY				VGSi and RNAV glidepath not coincident (VGSi Angle 3.00/TCH 34).				3600 WUNYE			
6000		3300		3000		3000		1960		1960		1960		1960	
GP 3.00°		TCH 40													
CATEGORY				A		B		C		D					
LPV DA				1674-1		250 (300-1)									
LNAV/VNAV DA				1721-1		297 (300-1)									
LNAV MDA				1800-1		376 (400-1)									
CIRCLING				1900-1		475 (500-1)		1940-1½ 515 (600-1½)		2000-2 575 (600-2)					