


LOC I-ABE <b>110.7</b>	APP CRS <b>063°</b>	Rwy Idg TDZE Apt Elev	<b>7599</b> <b>394</b> <b>394</b>
---------------------------	------------------------	-----------------------------	---

# ILS or LOC RWY 6

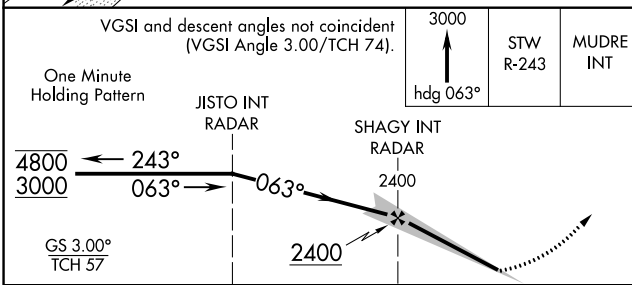
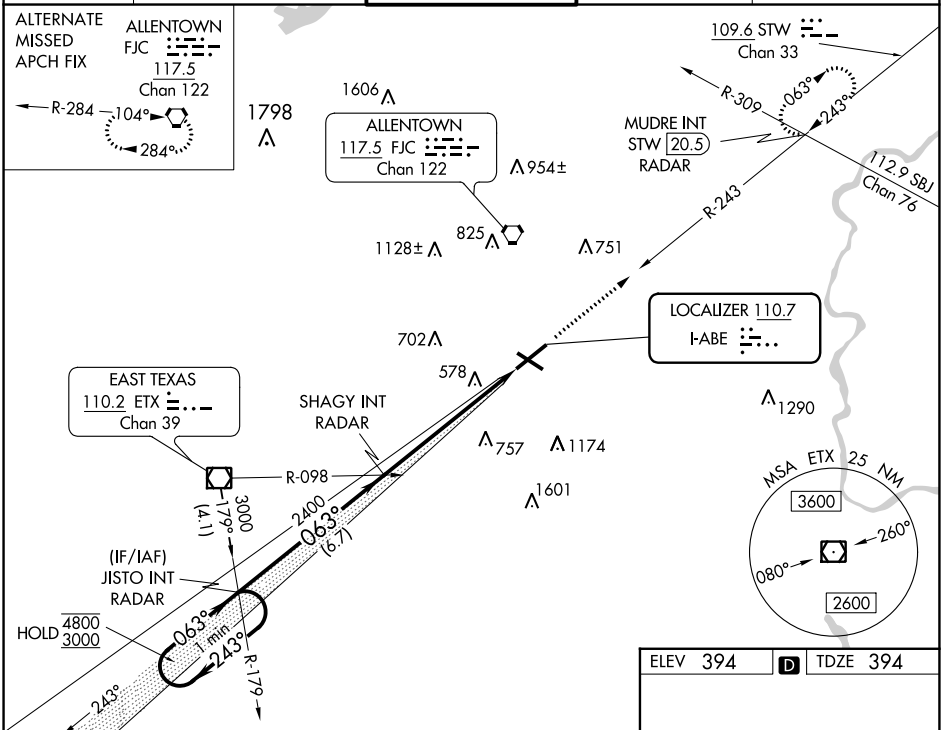
LEHIGH VALLEY INTL (ABE)

**▽** \*RVR 1800 authorized with use of FD or AP or HUD to DA.

**△** MALSR 

MISSED APPROACH: Climb to 3000 on heading 063° and STW R-243 to MUDRE INT/STW 20.5 DME/RADAR and hold.

ATIS <b>126.975</b>	ALLENTOWN APP CON <b>119.65 124.45 351.8</b>	ALLENTOWN TOWER <b>120.5 257.95</b>	GND CON <b>121.9 257.95</b>	CLNC DEL <b>124.05 257.95</b>
------------------------	---	--	--------------------------------	----------------------------------



ELEV 394 **D** TDZE 394

Category	A	B	C	D
S-ILS 6*		594/24	200 (200-1/2)	
S-LOC 6	920/24	526 (600-1/2)	920/55	526 (600-1)
<b>C</b> CIRCLING	920-1	526 (600-1)	1180-2 1/4 786 (800-2 1/4)	1600-3 1206 (1300-3)

Knots	60	90	120	150	180
Min:Sec	6:06	4:04	3:03	2:26	2:02

NE-4, 31 OCT 2024 to 28 NOV 2024

NE-4, 31 OCT 2024 to 28 NOV 2024