

VOR/DME BKE <b>115.3</b> Chan <b>100</b>	APP CRS <b>135°</b>	Rwy Idg TDZE Apt Elev <b>3373</b>	<b>N/A</b> <b>N/A</b> <b>3373</b>
--	------------------------	--------------------------------------	---

# VOR-A

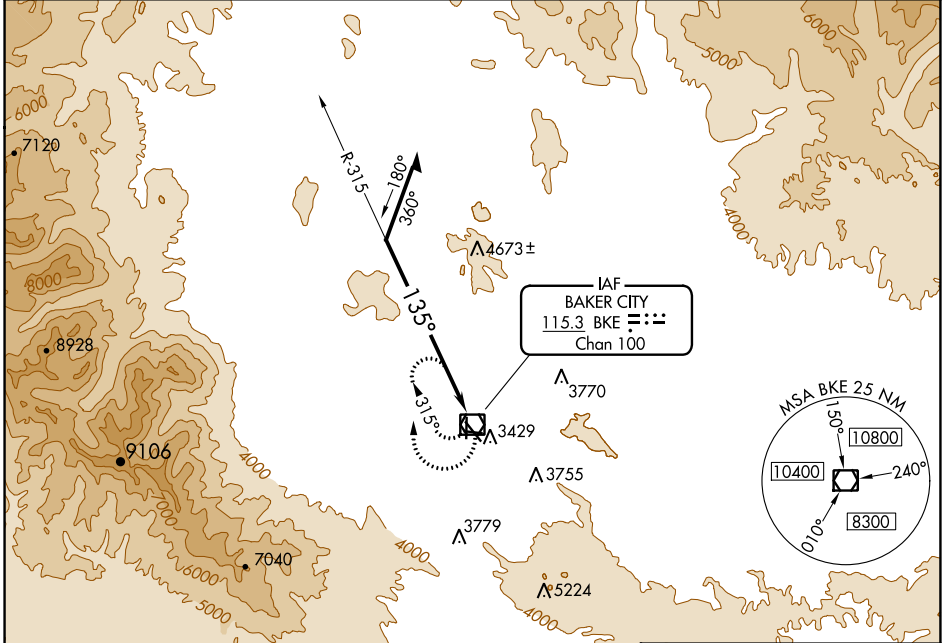
BAKER CITY MUNI (BKE)

**⚠** Circling to Rwy 8/17/26/35 NA at night. Helicopter visibility reduction below 1 SM NA.

**⚠** -23°C

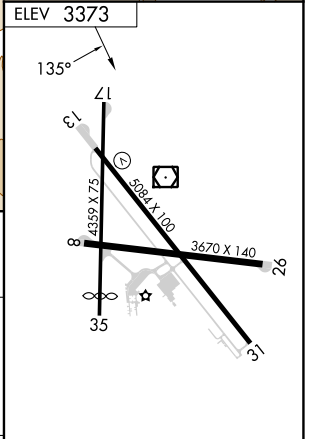
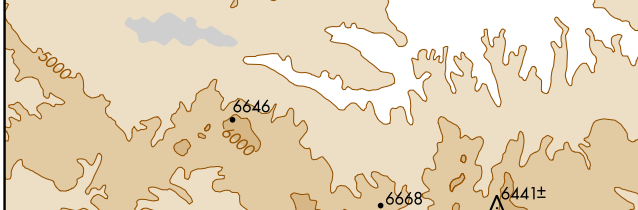
MISSED APPROACH: Climbing right turn to 6900 in BKE VOR/DME holding pattern.

ASOS <b>134.275</b>	SALT LAKE CENTER <b>128.05 306.95</b>	UNICOM <b>123.0 (CTAF) 0</b>
------------------------	--	---------------------------------



NW-1, 31 OCT 2024 to 28 NOV 2024

NW-1, 31 OCT 2024 to 28 NOV 2024



Remain within 10 NM	BKE VOR/DME	6900	BKE
6700	315°	135°	

CATEGORY	A	B	C	D
<b>C</b> CIRCLING	5200-1¼ 1827 (1900-1¼)	5200-1½ 1827 (1900-1½)	5200-3	1827 (1900-3)

REIL Rwys 13 and 31 **0**  
MIRL Rwy 13-31 **0**