

BILOXI, MISSISSIPPI

RNAV (GPS) RWY 4

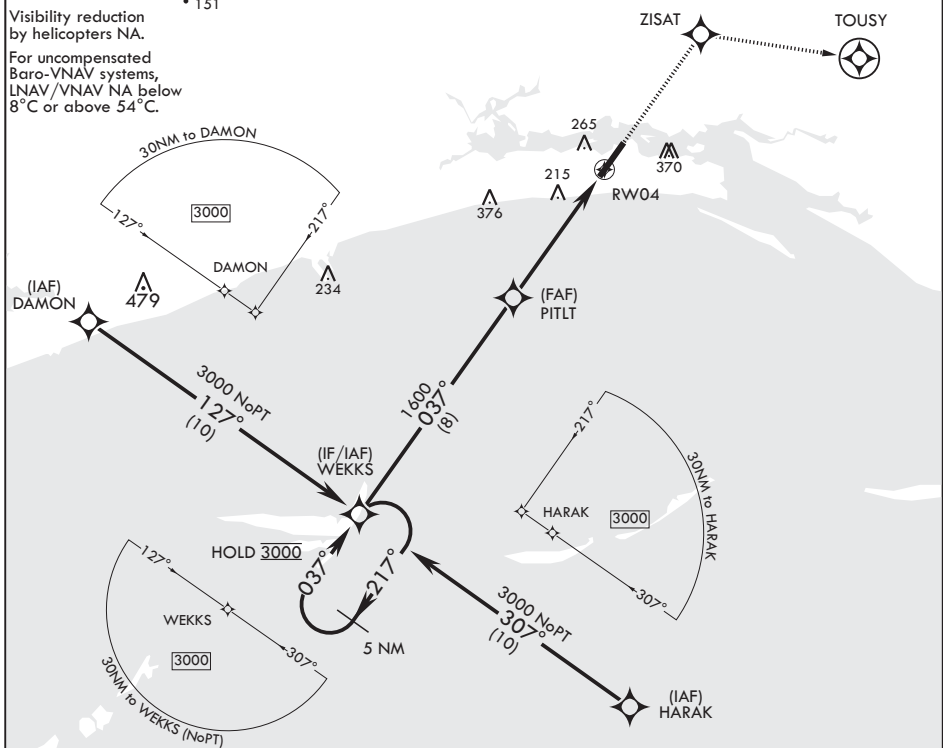
APCH CRS 037°	Rwy ldg TDZE Arprt Elev	6030 23 33
-------------------------	-------------------------------	---------------------------------------

AL-49 (USAF)

KEESLER AFB (KBIX)

RNP APCH MISSED APPROACH: Climb to 2100 direct ZISAT and track 101° to TOUSY. Expect ATC instructions.

ATIS 281.55	GULFPORT APP CON/DEP CON 124.6 354.1 130° - 309° 127.5 254.25 310° - 129°	TOWER* 120.75 269.075	GND CON 121.8 275.8	CLNC DEL 121.8 275.8
-----------------------	---	---------------------------------	-------------------------------	--------------------------------



EMERG SAFE ALT 100 NM 3100

5 NM Holding Pattern 3000 217° 037° WEKKs	2100 ZISAT tr 101° TOUSY	ELEV 33 RWY 22 2000' non-std apch lgt system RWY 4 ldg 6030' RWY 22 ldg 6630'	TDZE 23	
GP 3.04° TCH 48	1.2 NM to RWY4 1600 4.7 NM	7630 x 150 0.3% DOWN TWR		
CATEGORY	A	B	C	D
LNAV/VNAV DA	391/55		368 (400-1)	
LNAV MDA	460/55	437 (500-1)	460-1¼	437 (500-1¼)
CIRCLING	580-1 547 (600-1)	660-1 627 (700-1)	680-1¼ 647 (700-1¼)	680-2 647 (700-2)

HIRL all Rwys
REIL Rwy 4

BILOXI, MISSISSIPPI

30°25'N - 88°55'W

KEESLER AFB (KBIX)

Amdt 2 07SEP23

RNAV (GPS) RWY 4

SC-4, 31 OCT 2024 to 28 NOV 2024

SC-4, 31 OCT 2024 to 28 NOV 2024