

TACAN RWY 22

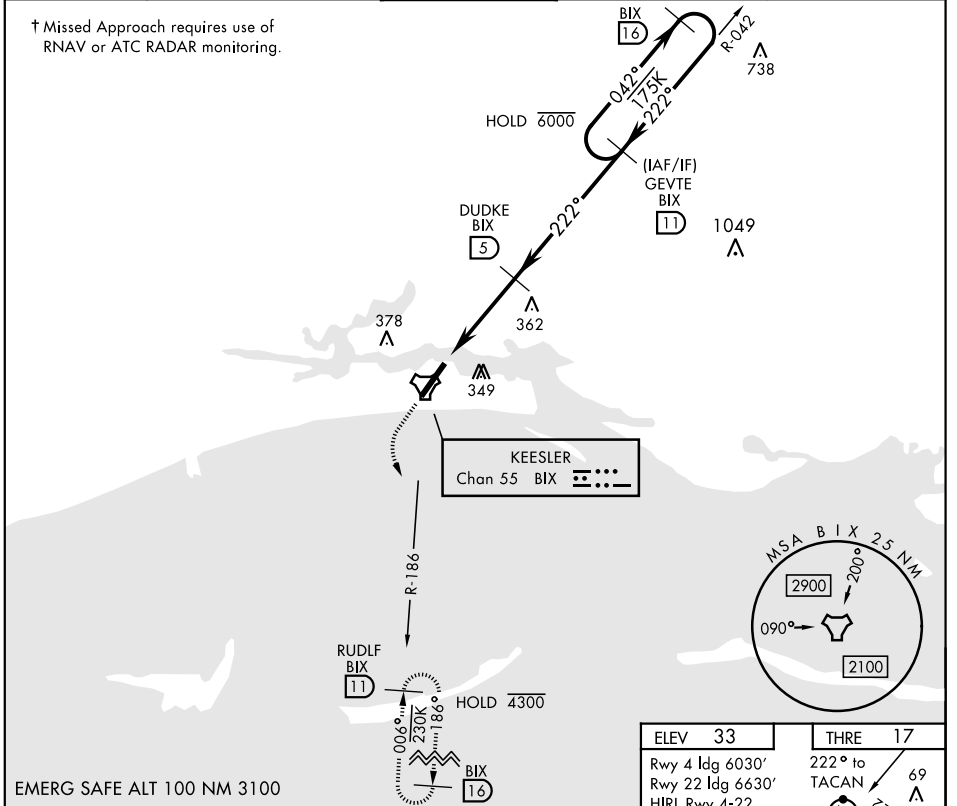
TACAN BIX Chan 55	APCH CRS 222°	Rwy ldg THRE 17 Arprt Elev 33	AL-49 [USAF]	KEESLER AFB (KBIX)
----------------------	-------------------------	-------------------------------------	--------------	--------------------

V * When ALS inop, increase CAT AB RVR to 55, vis to 1 mile; CAT CD vis to 1 1/4 miles.

A1

 † MISSED APPROACH: Climb to 800 tracking 215°, then turn left to intercept BIX R-186 to 11 DME (RUDLF) climbing to 2200 and hold.

ATIS 281.55	GULFPORT APP CON 124.6 354.1 (130°- 309°) 127.5 254.25 (310°- 129°)	KEESLER TOWER * 120.75 269.075	GND CON 121.8 275.8	CLNC DEL 121.8 275.8
-----------------------	-----------------------------------------------------------------------------------------	------------------------------------------	-------------------------------	--------------------------------



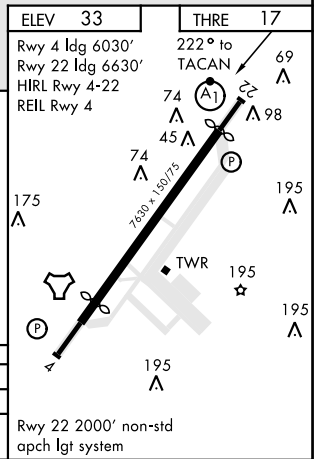
EMERG SAFE ALT 100 NM 3100

TACAN Diagram

Diagram details:

- Track**: 215° from 800 to 2200.
- Obstacles**: 175, 195, 195.
- Fixes**: TACAN, FABMI 1.4, 2.5.
- Approach**: 222° track from 2200 to 1400, then 042° track to runway.
- Obstacles**: 74, 45, 74, 195.
- Navigation**: TCH 55, 2.97°.

CATEGORY	A	B	C	D
S-22*	620/40 603 (600-3/4)	660-1	620-1 1/2 603 (600-1 1/2)	680-2
CIRCLING	587 (600-1)	627 (700-1)	647 (700-1 3/4)	647 (700-2)



TACAN RWY 22

SC-4, 31 OCT 2024 to 28 NOV 2024

SC-4, 31 OCT 2024 to 28 NOV 2024