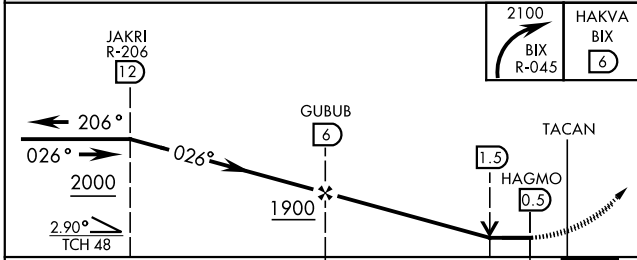
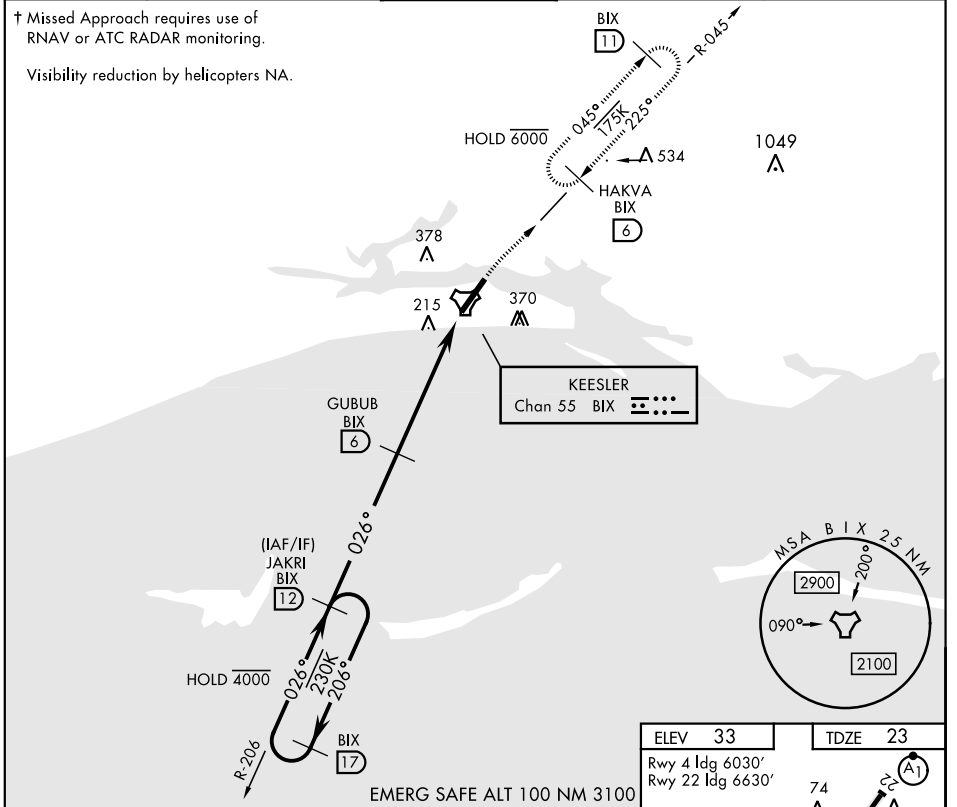


TACAN RWY 4

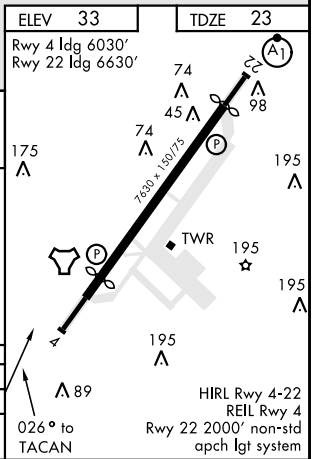
TACAN BIX Chan 55	APCH CRS 026°	Rwy ldg TDZE Arprt Elev 6030 23 33	AL-49 [USAF]	KEESLER AFB (KBIX)
----------------------	------------------	---	--------------	--------------------

† MISSED APPROACH: Turn right climbing to 2100 to intercept BIX TACAN R-045 to 6 DME (HAKVA) and hold.

ATIS 281.55	GULFPORT APP CON 124.6 354.1 (130°-309°) 127.5 254.25 (310°-129°)	KEESLER TOWER ★ 120.75 269.075	GND CON 121.8 275.8	CLNC DEL 121.8 275.8
----------------	---	-----------------------------------	------------------------	-------------------------



CATEGORY	A		B		C		D	
	520-55	497 (500-1)	520-1 $\frac{3}{8}$	497 (500-1 $\frac{3}{8}$)	680-1 $\frac{3}{4}$	680-2	647 (700-2)	
◉ CIRCLING	580-1	660-1	647 (700-1 $\frac{3}{4}$)	647 (700-2)				



SC-4, 31 OCT 2024 to 28 NOV 2024

SC-4, 31 OCT 2024 to 28 NOV 2024

TACAN RWY 4