

BILOXI, MISSISSIPPI

TACAN-B

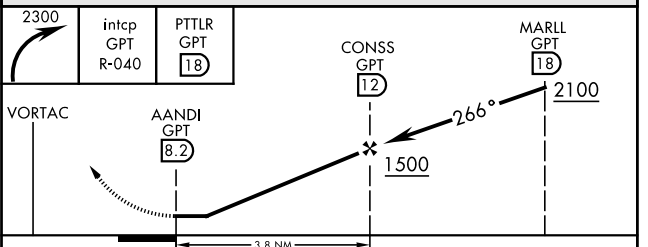
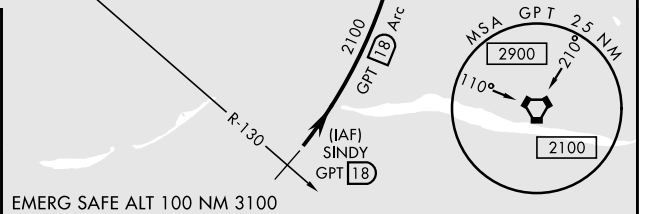
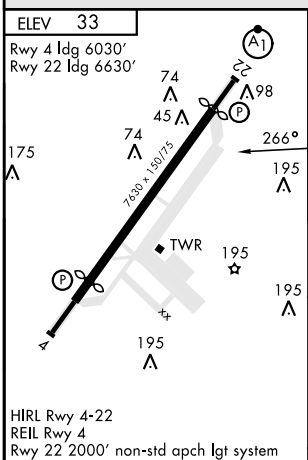
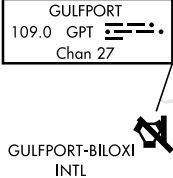
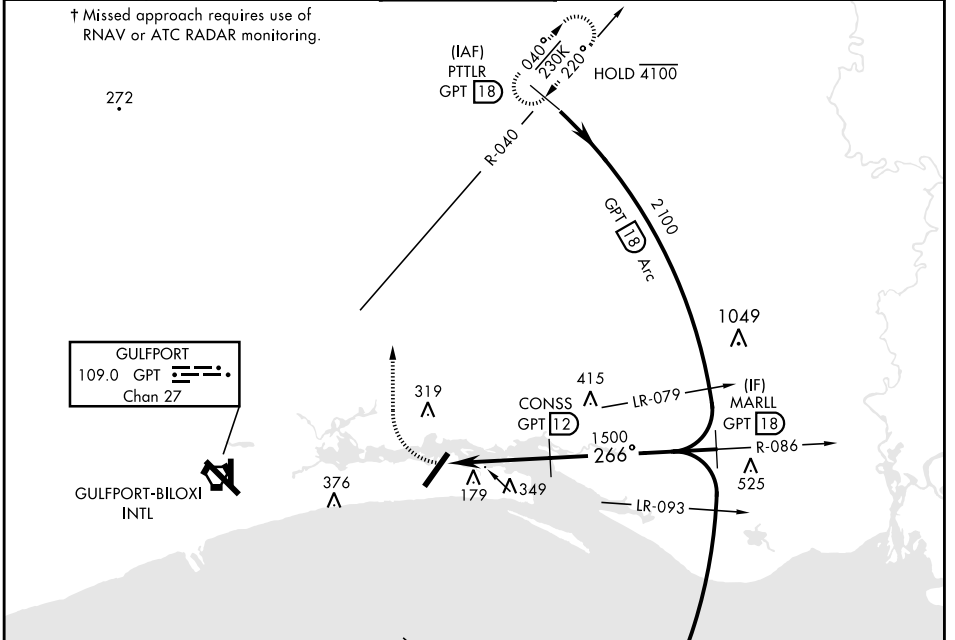
VORTAC GPT <b>109.0</b> Chan <b>27</b>	APCH CRS <b>266°</b>	Rwy ldg TDZE Arpt Elev <b>N/A</b> <b>N/A</b> <b>33</b>
--	-------------------------	---

AL-49 [USAF]

KEESLER AFB (KBIX)

† MISSED APPROACH: Climbing right turn to 2300 inctcp GPT VORTAC R-040 to PTTLR (R-040/18 DME) and hold.

ATIS <b>281.55</b>	GULFPORT APP CON <b>124.6 354.1</b> (130°-309°) <b>127.5 254.25</b> (310°-129°)	TOWER ★ <b>120.75 269.075</b>	GND CON <b>121.8 275.8</b>	CLNC DEL <b>121.8 275.8</b>
-----------------------	---	----------------------------------	-------------------------------	--------------------------------



FAF to MAP 3.8 NM					
Knots	60	90	120	150	180
Min:Sec	3:48	2:32	1:54	1:31	1:16
CATEGORY	A	B	C	D	
CIRCLING	620-1	660-1	680-1¾	680-2	
	587 (600-1)	627 (700-1)	647 (700-1¾)	647 (700-2)	

BILOXI, MISSISSIPPI

30° 25' N-88° 55' W

KEESLER AFB (KBIX)

Amdt 3 03NOV22

TACAN-B

SC-4, 31 OCT 2024 to 28 NOV 2024

SC-4, 31 OCT 2024 to 28 NOV 2024