

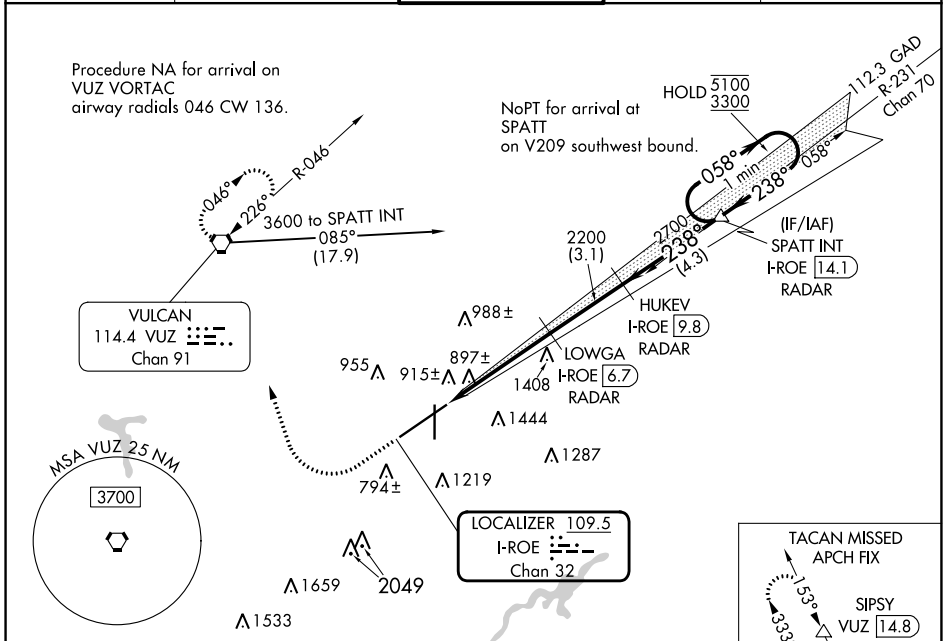
LOC/DME I-ROE 109.5 Chan 32	APP CRS 238°	Rwy Idg 10801 TDZE 641 Apt Elev 650
---	------------------------	--

ILS RWY 24 (SA CAT II)

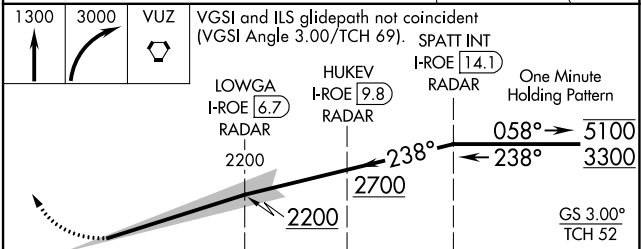
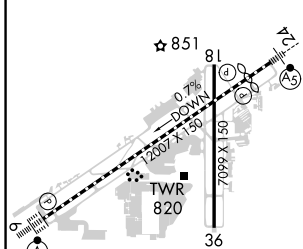
BIRMINGHAM-SHUTTLESWORTH INTL (BHM)

DME or RADAR required. Rwy 24 helicopter visibility reduction below RVR 4000 NA. Reduced lighting: requires specific OPSPEC, MSPEC, or LOA approval and use of autoland or HUD to touchdown.	MALSR 	MISSED APPROACH: Climb to 1300 then climbing right turn to 3000 direct VUZ VORTAC and hold (TACAN aircraft continue on VUZ VORTAC R-333 to SIPSY/VUZ 14.8 DME and hold NW, right turn, 153° inbound).
---	-----------	---

ATIS 119.4 270.1	BIRMINGHAM APP CON 123.8 256.8	BIRMINGHAM TOWER 119.9 317.725	GND CON 121.7 348.6	CLNC DEL 125.675 305.2
----------------------------	--	--	-------------------------------	----------------------------------



ELEV 650	D	TDZE 641
----------	----------	----------



CATEGORY	A	B	C	D
S-ILS 24	SA CAT II RA 92/12		100 DA 741	

SA CATEGORY II ILS-SPECIAL AIRCREW & AIRCRAFT CERTIFICATION REQUIRED

SE-4, 31 OCT 2024 to 28 NOV 2024

SE-4, 31 OCT 2024 to 28 NOV 2024