

LOC I-BHM <b>110.3</b>	APP CRS <b>058°</b>	Rwy ldg <b>12007</b> TDZE <b>606</b> Apt Elev <b>650</b>
---------------------------	------------------------	--

# ILS RWY 6 (CAT II)

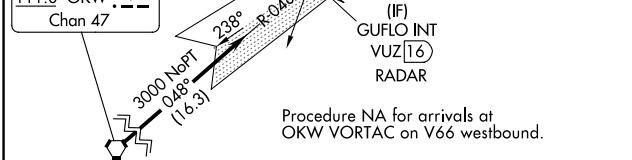
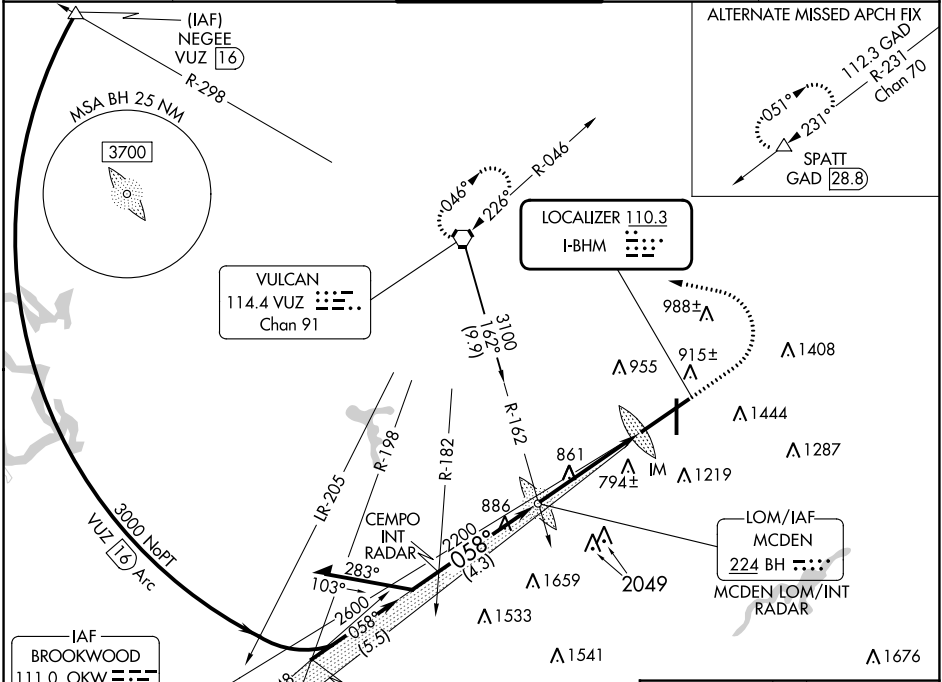
BIRMINGHAM-SHUTTLESWORTH INTL (BHM)

RNP APCH-GPS. From OKW VORTAC.

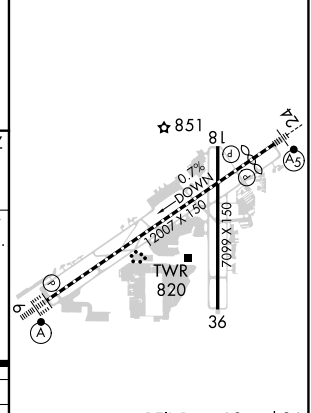


MISSED APPROACH: Climb to 2000 then climbing left turn to 3000 direct VUZ VORTAC and hold.

ATIS <b>119.4 270.1</b>	BIRMINGHAM APP CON <b>123.8 256.8</b>	BIRMINGHAM TOWER <b>119.9 317.725</b>	GND CON <b>121.7 348.6</b>	CLNC DEL <b>125.675 305.2</b>
----------------------------	--	--	-------------------------------	----------------------------------



ELEV 650	<b>D</b>	TDZE 606
----------	----------	----------



CATEGORY	A	B	C	D
S-ILS 6	RA 118/12 100		DA 706	

## CATEGORY II ILS - SPECIAL AIRCREW & AIRCRAFT CERTIFICATION REQUIRED

REIL Rwy 18 and 36  
TDZ/CL Rwy 6  
HIRL Rwy 6-24  
MIRL Rwy 18-36

SE-4, 31 OCT 2024 to 28 NOV 2024

SE-4, 31 OCT 2024 to 28 NOV 2024