

LOC/DME I-BXO <b>111.3</b> Chan <b>50</b>	APP CRS <b>183°</b>	Rwy Idg TDZE <b>644</b> Apt Elev <b>650</b>	<b>7099</b> <b>644</b> <b>650</b>
---	------------------------	---	---

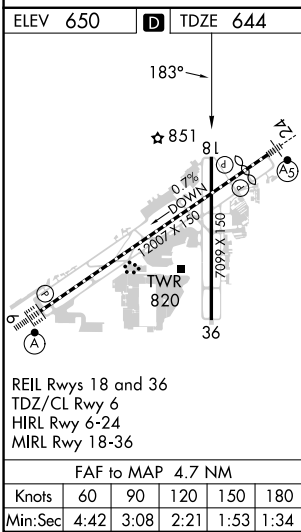
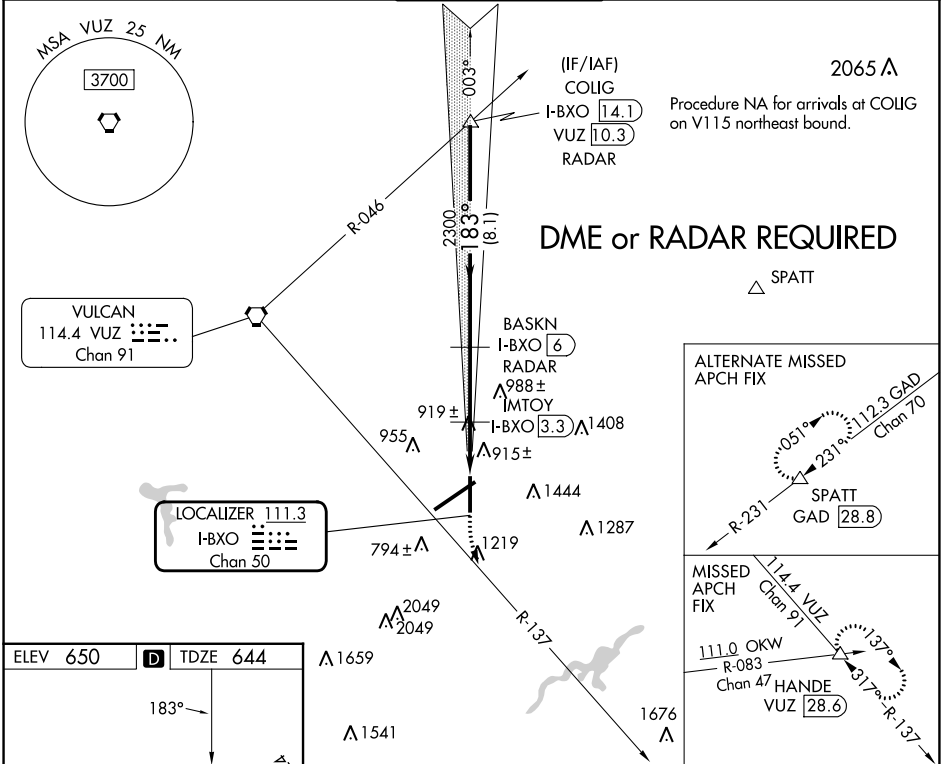
# LOC RWY 18

BIRMINGHAM-SHUTTLESWORTH INTL (BHM)

**▼** Rwy 18 helicopter visibility reduction below 3/4 SM NA. DME or RADAR required.

MISSED APPROACH: Climb to 1500 then climbing left turn to 3800 on VUZ VORTAC R-137 to HANDE INT/VUZ 28.6 DME and hold.

ATIS <b>119.4 270.1</b>	BIRMINGHAM APP CON <b>123.8 256.8</b>	BIRMINGHAM TOWER <b>119.9 317.725</b>	GND CON <b>121.7 348.6</b>	CLNC DEL <b>125.675 305.2</b>
----------------------------	--	--	-------------------------------	----------------------------------



1500	3800	HANDE Δ	BASKN I-BXO 6 RADAR	COLIG I-BXO 14.1 RADAR
183°	183°	3500	2300	3500
1.5	0.5 NM	2.7 NM	8.1 NM	
IMTOY I-BXO 2.8	IMTOY I-BXO 3.3			
I-BXO 1.3	I-BXO 2.8			
1380	1380	3.23° TCH 51		
CATEGORY	A	B	C	D
S-18	1380-1 736 (800-1)		1380-2 736 (800-2)	
IMTOY FIX MINIMUMS (DME REQUIRED)				
S-18	1200-1 556 (600-1)		1200-1½ 556 (600-1½)	

SE-4, 31 OCT 2024 to 28 NOV 2024

SE-4, 31 OCT 2024 to 28 NOV 2024