

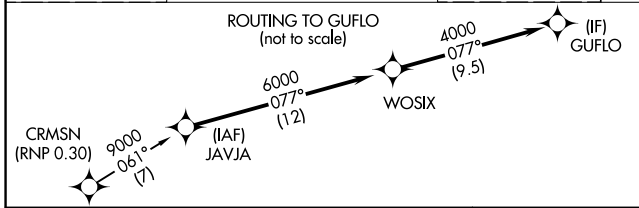
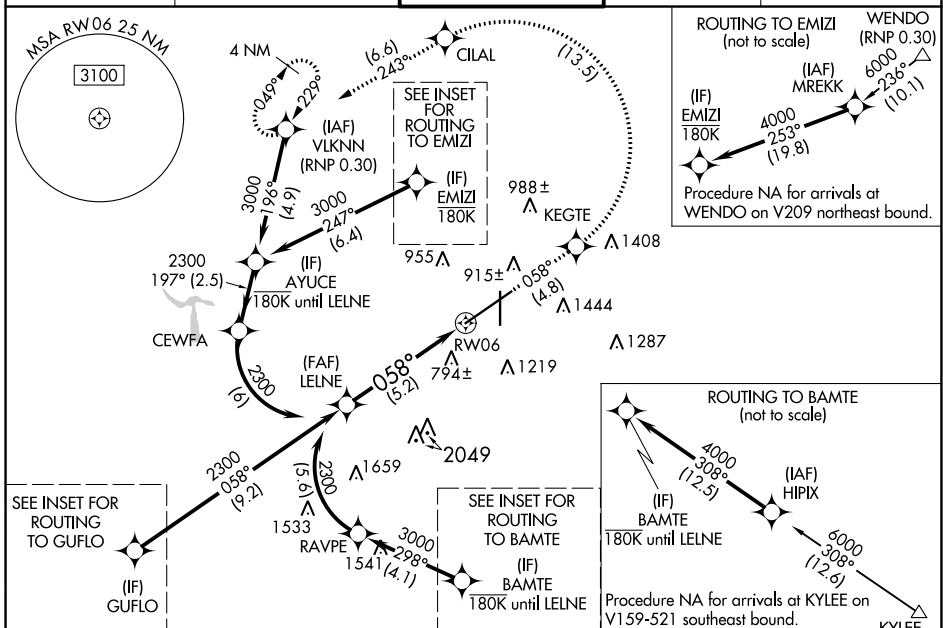
APP CRS 058°	Rwy ldg TDZE Apt Elev	12007 606 650
------------------------	-----------------------------	--

RNAV (RNP) Z RWY 6

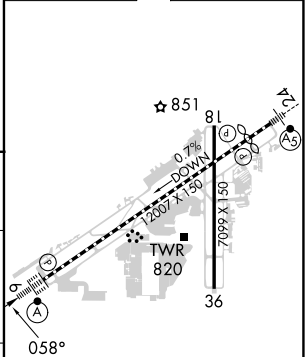
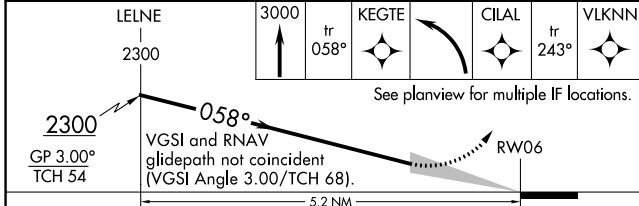
BIRMINGHAM-SHUTTLESWORTH INTL (BHM)

RNP AR APCH. RF required.	ALSF-2	MISSED APPROACH: Climb to 3000 on track 058° to KEGTE left turn to CILAL and track 243° to VLKNN and hold.
▼ For uncompensated Baro-VNAV systems, procedure NA below -8°C or above 54°C.		

ATIS 119.4 270.1	BIRMINGHAM APP CON 123.8 256.8	BIRMINGHAM TOWER 119.9 317.725	GND CON 121.7 348.6	CLNC DEL 125.675 305.2
----------------------------	--	--	-------------------------------	----------------------------------



ELEV 650	D TDZE 606
----------	-------------------



CATEGORY	A	B	C	D
RNP 0.30 DA		1138/55	532 (500-1)	

REIL Rwy 18 and 36
TDZ/CL Rwy 6
HIRL Rwy 6-24
MIRL Rwy 18-36

AUTHORIZATION REQUIRED

SE-4, 31 OCT 2024 to 28 NOV 2024

SE-4, 31 OCT 2024 to 28 NOV 2024