

WAAS CH <b>63231</b> <b>W13A</b>	APP CRS <b>132°</b>	Rwy Idg TDZE Apt Elev	<b>7399</b> <b>19</b> <b>22</b>
--	------------------------	-----------------------------	---------------------------------------

# RNAV (GPS) RWY 13

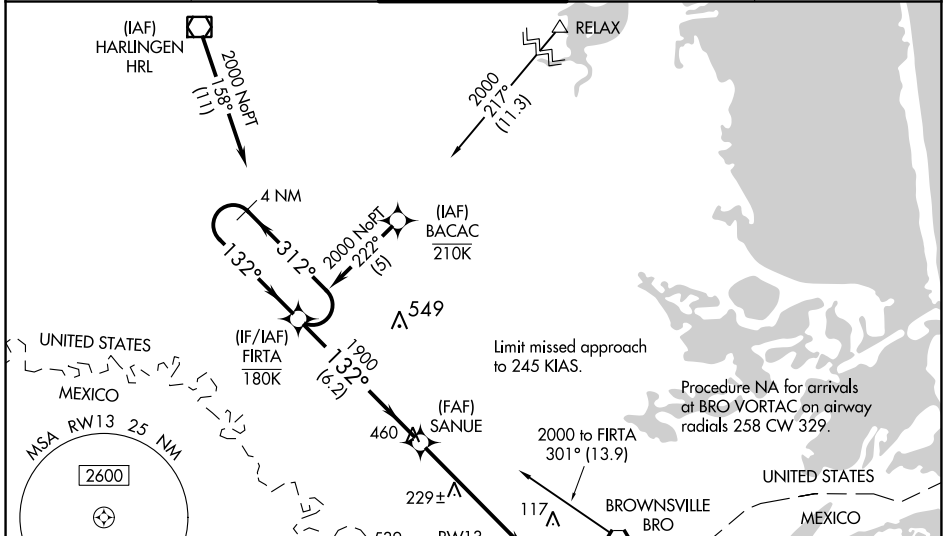
BROWNSVILLE/SOUTH PADRE ISLAND INTL (BRO)

⚠ Circling to Rwy 18 NA at night. For uncompensated Baro-VNAV systems, procedure NA below 3°C (38°F) or above 54°C (130°F). DME/DME RNP-0.3 NA. When local altimeter setting not received use Port Isabel altimeter setting and increase LPV DA to 257 feet and LNAV/VNAV DA to 411 feet and all MDA 40 feet; increase LNAV/VNAV visibility all Cats to RVR 4500, LNAV visibility Cat C and D to RVR 5500. VDP and Baro-VNAV NA when using Port Isabel altimeter setting. For inop MALSRL, increase LNAV Cat C/D visibility to 1½ mile. \*\* RVR 1800 authorized with use of FD or AP or HUD to DA, NA when using Port Isabel altimeter setting.

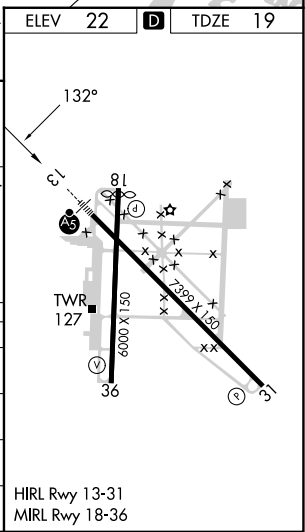
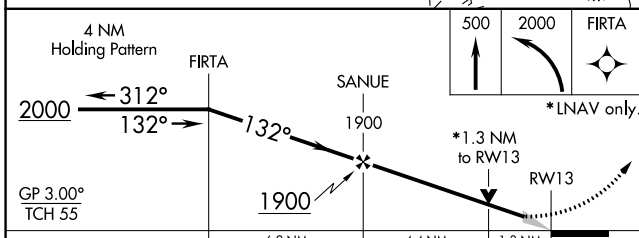
MALSRL

MISSED APPROACH:  
Climb to 500 then climbing left turn to 2000 direct FIRTA and hold.

ATIS <b>128.55</b>	VALLEY APP CON <b>119.5 257.6</b>	<b>BROWNSVILLE TOWER*</b> <b>118.9 (CTAF) 239.3</b>	GND CON <b>121.9</b>	UNICOM <b>122.95</b>
-----------------------	--------------------------------------	--	-------------------------	-------------------------



ELEV	22	D	TDZE	19
------	----	---	------	----



CATEGORY	A	B	C	D
LPV DA **		219/24	200 (200-½)	
LNAV/VNAV DA		373/30	354 (400-⅙)	
LNAV MDA	480/24	461 (500-½)	480/50	461 (500-1)
CIRCLING	480-1 458 (500-1)	540-1 518 (600-1)	540-1½ 518 (600-1½)	680-2 658 (700-2)

HIRL Rwy 13-31  
MIRL Rwy 18-36

SC-3, 31 OCT 2024 to 28 NOV 2024

SC-3, 31 OCT 2024 to 28 NOV 2024