

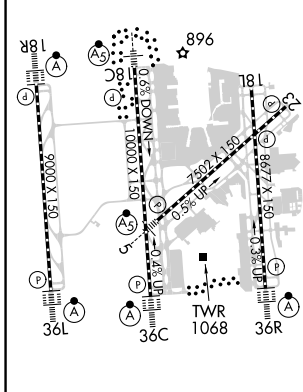
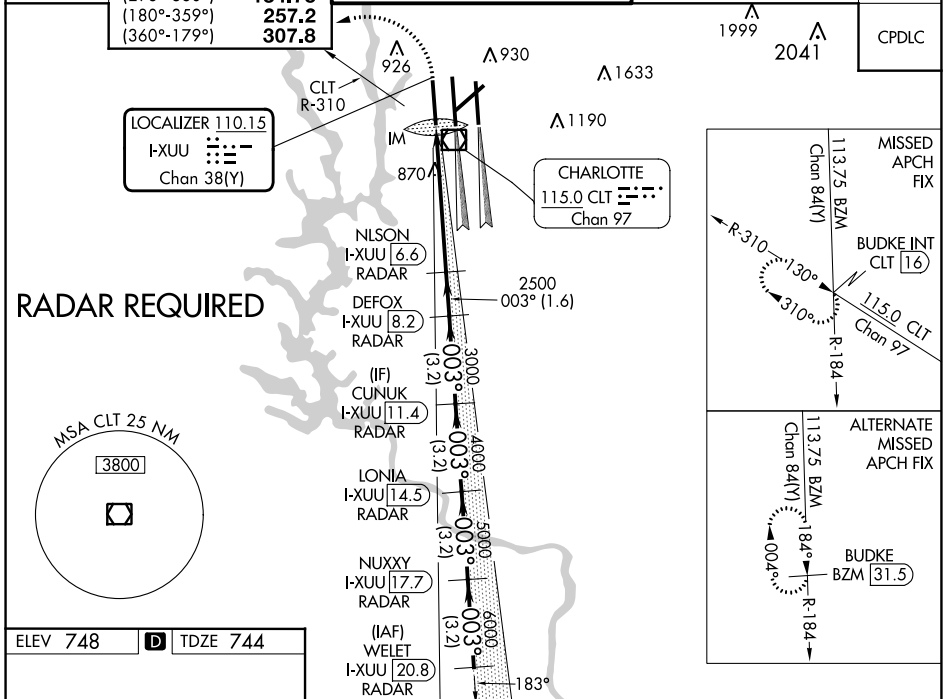
LOC/DME I-XUU 110.15 Chan 38(Y)	APP CRS 003°	Rwy Idg TDZE 744 Apt Elev 748	9000
---	------------------------	---	-------------

ILS RWY 36L (CAT II & III)

CHARLOTTE/DOUGLAS INTL (CLT)

<p>⚠ Simultaneous approach authorized. DME or RADAR required.</p>	<p>ALSF-2</p>	<p>MISSED APPROACH: Climb to 1200 then climbing left turn to 4000 on CLT VOR/DME R-310 to BUDKE INT/CLT 16 DME and hold.</p>
--	---------------	--

D-ATIS ARR 121.15 DEP 132.1	CHARLOTTE APP CON (001°-119°) 128.32 (120°-295°) 120.05 (296°-360°) 134.75 (180°-359°) 257.2 (360°-179°) 307.8	CHARLOTTE TOWER (Rwys 18L-36R) 118.1 257.8 (Rwy 18C-36C) 126.4 257.8 (Rwy 18R-36L) 133.35 257.8	GND CON 121.8 348.6 (WEST) 121.9 348.6 (EAST)	CLNC DEL 127.15 348.6
---	--	---	---	---



1200	4000	CLT R-310	BUDKE INT	VGSI and ILS glidepath not coincident (VGSI Angle 3.00/TCH 70).	WELET I-XUU 20.8 RADAR
<p>7000 003° 7000 GS 3.00° TCH 55</p>					
<p>IM 841 2500 3000 4000 5000 6000</p>					
<p>NLSON I-XUU 6.6 RADAR DEFOX I-XUU 8.2 RADAR CUNUK I-XUU 11.4 RADAR LONIA I-XUU 14.5 RADAR NUXXY I-XUU 17.7 RADAR</p>					
<p>1120' -5.3 NM -1.6 NM -3.2 NM -3.2 NM -3.2 NM -3.2 NM</p>					
CATEGORY	A	B	C	D	
S-ILS 36L	CAT II RA 106/12 100 DA 844				
S-ILS 36L	CAT IIIa RVR 07				
S-ILS 36L	CAT IIIb RVR 06				
S-ILS 36L	CAT IIIc NA				

CATEGORY II & III ILS SPECIAL AIRCREW & AIRCRAFT CERTIFICATION REQUIRED

SE-2, 31 OCT 2024 to 28 NOV 2024

SE-2, 31 OCT 2024 to 28 NOV 2024