

LOC/DME I-PEP <b>111.3</b> Chan 50	APP CRS <b>183°</b>	Rwy Ildg <b>10000</b> TDZE <b>742</b> Apt Elev <b>748</b>
--	------------------------	---

# ILS or LOC RWY 18C

CHARLOTTE/DOUGLAS INTL (CLT)

RADAR required for procedure entry. DME or RADAR required

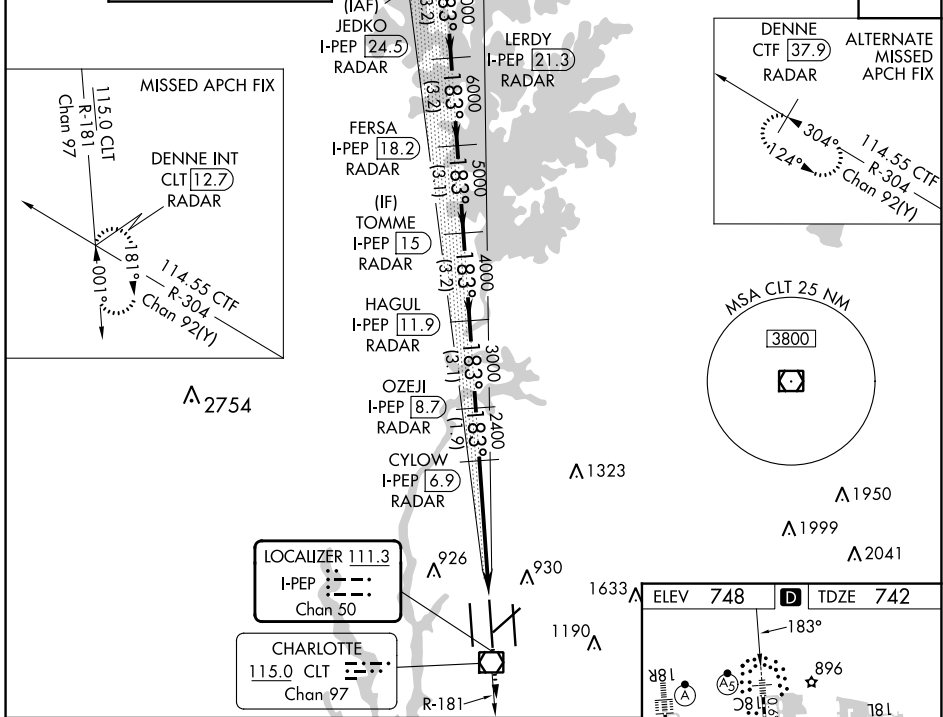
⚠ Circling NA at night. Simultaneous approach authorized. For inop ALS, increase S-LOC 18C Cat C/D visibility to 1/8 SM.

\*\* RVR 1800 authorized with the use of FD or AP or HUD to DA.

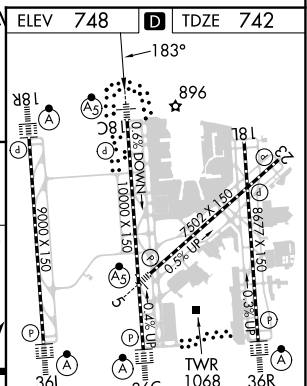
MALSRR

MISSED APPROACH: Climb to 3000 on CLT VOR/DME R-181 to DENNE INT/CLT 12.7 DME/RADAR and hold.

D-ATIS ARR <b>121.15</b> DEP <b>132.1</b>	CHARLOTTE APP CON (001°-119°) <b>128.32</b> (120°-295°) <b>120.05</b> (296°-360°) <b>134.75</b> (180°-359°) <b>257.2</b> (360°-179°) <b>307.8</b>	CHARLOTTE TOWER (Rwys 18L-36R) <b>118.1 257.8</b> (Rwy 18C-36C) <b>126.4 257.8</b> (Rwy 18R-36L) <b>133.35 257.8</b>	GND CON <b>121.8 348.6</b> (WEST) <b>121.9 348.6</b> (EAST)	CLNC DEL <b>127.15</b> <b>348.6</b>
---	--	---	---	---



JEDKO I-PEP (24.5) RADAR	LERDY I-PEP (21.3) RADAR	FERSA I-PEP (18.2) RADAR	TOMME I-PEP (15) RADAR	HAGUL I-PEP (11.9) RADAR	OZEJI I-PEP (8.7) RADAR	CYLOW I-PEP (6.9) RADAR	DENNE INT I-PEP (1.8) *LOC only.
8000	7000	6000	5000	4000	3000	2400	3000
GS 3.00° TCH 55							
-3.2 NM		-3.1 NM		-3.1 NM		-1.9 NM	



CATEGORY	A	B	C	D
S-ILS 18C **	942/24		200 (200-1/2)	
S-LOC 18C	1220/24 478 (500-1/2)		1220/50 478 (500-1)	
CIRCLING	1380-1 632 (700-1)		1500-2 1/4 752 (800-2 1/4)	

FAF to MAP 5 NM					
Knots	60	90	120	150	180
Min:Sec	5:00	3:20	2:30	2:00	1:40

SE-2, 31 OCT 2024 to 28 NOV 2024

SE-2, 31 OCT 2024 to 28 NOV 2024