

LOC I-DQG	APP CRS	Rwy Idg	10000
111.7	003°	TDZE	707
		Apt Elev	748

ILS or LOC RWY 36C

CHARLOTTE/DOUGLAS INTL (CLT)

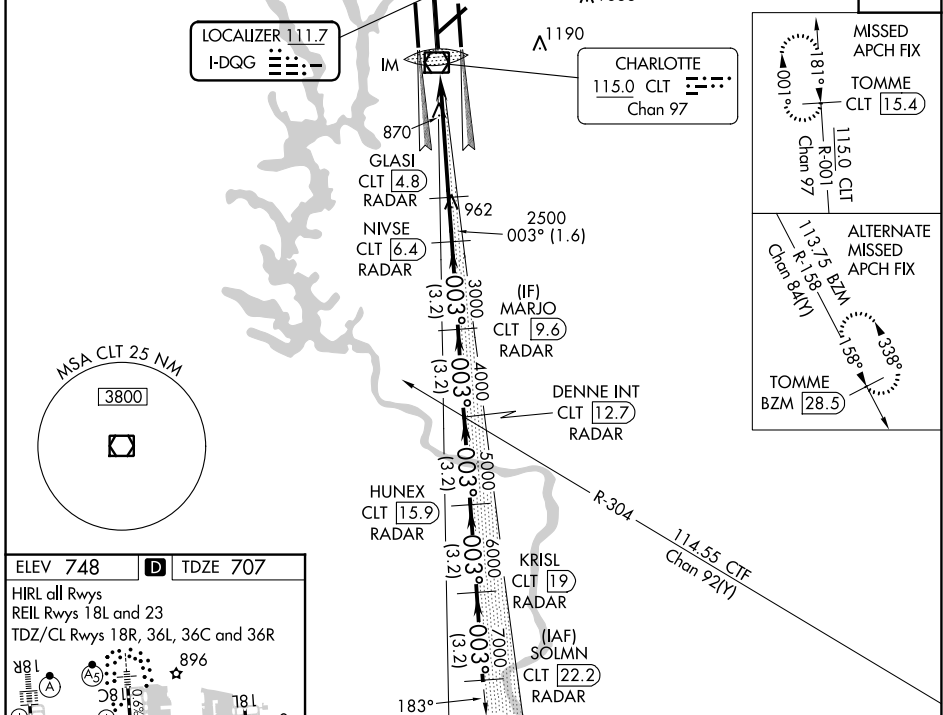
RADAR required for procedure entry. DME or RADAR required.

⚠ Circling NA at night. Simultaneous approach authorized. DQG ILS LLZ Rwy 36C unusable for rollout guidance.

ALSIF-2

MISSED APPROACH: Climb to 3000 on CLT VOR/DME R-001 to TOMME/CLT 15.4 DME and hold.

D-ATIS	CHARLOTTE APP CON	CHARLOTTE TOWER	GND CON	CLNC DEL
ARR 121.15	(001°-119°) 128.32	(Rwys 18L-36R) 118.1 257.8	121.8 348.6 (WEST)	127.15
DEP 132.1	(120°-295°) 120.05	(Rwy 18C-36C) 126.4 257.8	121.9 348.6 (EAST)	348.6
	(296°-360°) 134.75	(Rwy 18R-36L) 133.35 257.8		
	(180°-359°) 257.2			
	(360°-179°) 307.8			



ELEV 748 **D** TDZE 707

HIRL all Rwys
 REIL Rwys 18L and 23
 TDZ/CL Rwys 18R, 36L, 36C and 36R

Map details: 18L, 18R, 36L, 36C, 36R, TWR 1068, 896, 897, 898, 899, 900, 901, 902, 903, 904, 905, 906, 907, 908, 909, 910, 911, 912, 913, 914, 915, 916, 917, 918, 919, 920, 921, 922, 923, 924, 925, 926, 927, 928, 929, 930, 931, 932, 933, 934, 935, 936, 937, 938, 939, 940, 941, 942, 943, 944, 945, 946, 947, 948, 949, 950, 951, 952, 953, 954, 955, 956, 957, 958, 959, 960, 961, 962, 963, 964, 965, 966, 967, 968, 969, 970, 971, 972, 973, 974, 975, 976, 977, 978, 979, 980, 981, 982, 983, 984, 985, 986, 987, 988, 989, 990, 991, 992, 993, 994, 995, 996, 997, 998, 999, 1000. Gradients: 0.6% DOWN, 0.5% UP, 0.4% UP, 0.3% UP.

FAF to MAP 5.4 NM

Knots	60	90	120	150	180
Min:Sec	5:24	3:36	2:42	2:10	1:48

C CIRCLING 1380-1 632 (700-1) 1500-2¼ 752 (800-2¼) 1500-2½ 752 (800-2½)

3000 ↑

CLT R-001 TOMME CLT 15.4

GLASI CLT 4.8 RADAR NIVSE CLT 6.4 RADAR MARJO CLT 9.6 RADAR DENNE INT CLT 12.7 RADAR HUNEX CLT 15.9 RADAR KRISL CLT 19 RADAR SOLMN CLT 22.2 RADAR

3000 2500 3000 4000 5000 6000 7000 8000

0.2 5.2 NM 1.6 NM 3.2 NM 3.2 NM 3.2 NM 3.2 NM 3.2 NM

CATEGORY	A	B	C	D
S-ILS 36C	907/18 200 (200-½)			
S-LOC 36C	1120/24 413 (400-½)			

VGSI and ILS glidepath not coincident (VGSI Angle 3.00/TCH 72).

SE-2, 31 OCT 2024 to 28 NOV 2024

SE-2, 31 OCT 2024 to 28 NOV 2024